

# Monthly Report on Short-term Transactions of Electricity in India

May 2024



Economics Division  
Central Electricity Regulatory Commission  
6th, 7th & 8th Floors, Tower B, World Trade Centre  
Nauroji Nagar, New Delhi- 110029



# Contents

S.No.	Contents	Page No
	Contents	i
	List of Tables	ii
	List of Figures	iii
	Abbreviations	iv
1	Introduction	1
2	Volume of Short-term Transactions of Electricity and DSM	1
3	Price of Short-term Transactions of Electricity and DSM Charges	4
3.1	<i>Price of electricity transacted through Traders</i>	4
3.2	<i>Price of electricity transacted through Power Exchanges</i>	4
3.3	<i>DSM Charges</i>	4
4	Trading Margin	5
5	Volume of Short-term Transactions of Electricity (Regional Entity-wise)	5
6	Congestion on Inter-State Transmission Corridor for Day-Ahead Market and Real-Time Market on Power Exchanges	6
7	Volume and Price of Renewable Energy Certificates (RECs)	7
8	Inferences	8

<b>S.No.</b>	<b>List of Tables</b>	<b>Page No.</b>
Table-1	Volume of Short-term Transactions of Electricity and DSM (All India)	11
Table-2	Percentage Share of Electricity Transacted by Trading Licensees	13
Table-3	Price of Electricity Transacted through Traders	14
Table-4	Price of Electricity Transacted through Traders (Time-wise)	14
Table-5	Price of Electricity Transacted in Day Ahead Market	14
Table-6	Price of Electricity Transacted in Green Day Ahead Market	14
Table-7	Price of Electricity Transacted in High Price Day Ahead Market	14
Table-8	Price of Electricity Transacted in Real Time Market	14
Table-9	Volume and Price of Electricity in Term Ahead Market of IEX	14
Table-10	Volume and Price of Electricity in Term Ahead Market of PXIL	14
Table-11	Volume and Price of Electricity in Term Ahead Market of HPX	15
Table-12	Volume and Price of Electricity in Green Term Ahead Market of IEX	15
Table-13	Volume and Price of Electricity in Green Term Ahead Market of PXIL	15
Table-14	Volume and Price of Electricity in Green Term Ahead Market of HPX	15
Table-15	Volume and Price of Electricity in High Price Term Ahead Market of IEX	15
Table-16	Volume and Price of Electricity in High Price Term Ahead Market of PXIL	15
Table-17	Volume and Price of Electricity in High Price Term Ahead Market of HPX	15
Table-18	Volume of Electricity Sold in Day Ahead Market through Power Exchanges	17
Table-19	Volume of Electricity Purchased in Day Ahead Market through Power Exchanges	19
Table-20	Volume of Electricity Sold in Green Day Ahead Market through Power Exchanges	20
Table-21	Volume of Electricity Purchased in Green Day Ahead Market through Power Exchanges	21
Table-22	Volume of Electricity Sold in High Price Day Ahead Market through Power Exchanges	22
Table-23	Volume of Electricity Purchased in High Price Day Ahead Market through Power Exchanges	22
Table-24	Volume of Electricity Sold in Real Time Market through Power Exchanges	23
Table-25	Volume of Electricity Purchased in Real Time Market through Power Exchanges	25
Table-26	Total Volume of Net Transactions through Power Exchanges (Regional Entity-wise)	26
Table-27	Details of Congestion in Power Exchanges	29
Table-28	Volume of Transactions through Power Exchanges (Day-wise)	30
Table-29(a)	Price of Day Ahead Transactions of Electricity (Day-Wise)	31
Table-29(b)	Price of Green Day Ahead Transactions of Electricity (Day-Wise)	32
Table-29(c)	Price of Real Time Transactions of Electricity (Day-Wise)	33
Table-29(d)	Price of High Price Day Ahead Transactions of Electricity (Day-Wise)	34
Table-30	Volume of Transactions through Power Exchanges (Regional Entity-wise)	35
Table-31	Volume and Charges under DSM (Day wise)	38
Table-32	Volume of Electricity Under drawal/ Over Injection (Exported) under DSM	39
Table-33	Volume of Electricity Over drawal/ Under Injection (Imported) under DSM	43
Table-34	Volume and Price of Renewable Energy Certificates (RECs) Transacted through Power Exchanges and through Traders (Bilateral)	47
Table-35(a)	Volume and Price of Cross Border Trade through Day Ahead Market at IEX	47
Table-35(b)	Volume and Price of Cross Border Trade through Real Time Market at IEX	47

<b>S. No.</b>	<b>List of Figures</b>	<b>Page No.</b>
Figure-1	Volume of various kinds of Electricity Transactions in Total Electricity Generation	11
Figure-2	Volume of Short-term Transactions of Electricity and DSM Volume	11
Figure-3	Volume transacted in different markets segments on Power Exchanges	12
Figure-4	Volume of transactions on Power Exchange and DSM Volume (Day-wise)	12
Figure-5	Percentage Share of Electricity Transacted by Trading Licensees	13
Figure-6	Weighted Average Price of Short-term Transactions of Electricity	16
Figure-7	Weighted Average Price of Short-term Transactions of Electricity (Day-wise)	16

## Abbreviations

<b>Abbreviation</b>	<b>Expanded Version</b>
ABSP_ANTP	Acme Bhiwadi Solar Power Private Limited, Anantpur
ACBIL	ACB (India) Limited
ACP	Area Clearing Price
ACV	Area Clearing Volume
ACME_SLR	ACME Solar Power Project
ACME_RUMS	Acme Rewa Ultra Mega Solar Project
ADANI_4RE	Adani Renewable Energy Holding Four Limited
ADANI GREEN	Adani Green Energy Limited
ADANIHB_SLR	Adani Hybrid Energy Jaisalmer One Limited (Solar)
ADANI_SLR 4	Adani Solar Energy Four Private Limited
ADANIHB_WIND	Adani Hybrid Energy Jaisalmer One Limited (Wind)
ADEPT	Adept Renewable Technologies Private Limited
ADY1_PVGD	Adyah Solar Energy Pvt Ltd., Block 1 Pavagada Solar Park
ADY2_PVGD	Adyah Solar Energy Pvt Ltd., Block 2 Pavagada Solar Park
ADY3_PVGD	Adyah Solar Energy Pvt Ltd., Block 3 Pavagada Solar Park
ADY6_PVGD	Adyah Solar Energy Pvt Ltd., Block 6 Pavagada Solar Park
ADY10_PVGD	Adyah Solar Energy Pvt Ltd., Block 10 Pavagada Solar Park
ADY13_PVGD	Adyah Solar Energy Pvt Ltd., Block 13 Pavagada Solar Park
AGEMPL BHUJ	Adani Green Energy (MP) Ltd.,Bhuj
AHEJOL_S_FTG2	Adani Hybrid Energy Jaisalmer One Limited (SOLAR)
AHEJOL_W_FTG2	Adani Hybrid Energy Jaisalmer One Limited (WIND)
AHEJ2L_SOLAR	Adani Hybrid Energy Jaisalmer Two Limited (Solar)
AHEJ3L_SOLAR	Adani Hybrid Energy Jaisalmer Three Limited (Solar)
AHEJ4L_SOLAR	Adani Hybrid Energy Jaisalmer Four Limited-Hybrid Solar
AHEJ4L_WIND	Adani Hybrid Energy Jaisalmer Four Limited-Hybrid Wind
AHSP_ANTP	Acme Hisar Solar Power Private Limited,Anantpur
AKS_PVGD	ACME Kurukshetra Solar Energy Pvt. Ltd
AKSP_ANTP	Acme Karnal Solar Power Private Limited,Anantpur
ALFANAR_BHUJ	Alfanar Group Wind Project, Bhuj, Gujarat
ALTRA XERGI	Altra Xergi Power Private Limited
AMP_GREEN6	Amp Energy Green Six Private Limited
AMPLUS_AGES	Amplus Ages Private Limited
AMPS Hazira	Arcelor Mittal Nippon Steel, Hazira
APTEL	Appellate Tribunal for Electricity
ARERJL_SLR	Adani Renewable Energy Park Rajasthan Ltd.
ARINSUM_RUMS	Solenergi RewaUltraMega Solar Project
ARS_PVGD	ACME REWARI Solar Power Pvt Ltd.
ARTPP	Adani Power Limited - Raipur TPP
ASEJTL_SLR	Adani Solar Energy Jodhpur Two Ltd.
AVAADA1_PVGD	Avaada Solar Energy Private Ltd., Pavagada Project 1
AVAADA2_PVGD	Avaada Solar Energy Private Ltd., Pavagada Project 2
AVADARJHN_SLR	Avaada Rjhn Private Limited_Solar
AYANA_NPKUNTA	Ayana Power, NP Kunta
AZURE_ANTP	Azure Power,Anantpur
AZURE_PVGD	Azure Power,Pavagada
AZURE_SLR	Azure Power Solar Power Project
AZURE34_SLR	Azure Power 34 Pvt. Ltd. Solar Power Project
AZURE43_SLR	Azure Power Forty Three Private Limited
BALCO	Bharat Aluminum Company Limited
BARC	Bhabha Atomic Research Centre
BASOCHHU HEP	Basochhu Hydropower Plant Bhutan
BBMB	Bhakra Beas Management Board

BETAM_TCN	Betam Wind Energy Private Limited, Tuticorin
BHADRAVATHI HVDC	Bhadravathi High Voltage Direct Current Link
BRBCL	Bhartiya Rail Bijlee Company Limited
CEA	Central Electricity Authority
CERC	Central Electricity Regulatory Commission
CGPL	Coastal Gujarat Power Limited
CHUKHA HEP	Chhukha Hydroelectric Project, Bhutan
CHUZACHEN HEP	Chuzachen Hydro Electric Power Project
CLEAN_SLR	Clean Solar Power Pvt. Ltd
CLEANSPL_SLR	Clean Solar Jodhpur Pvt Ltd
COASTGEN	Coastal Energen Private Limited
DAGACHU	Dagachhu Hydro Power Corporation
DAM	Day Ahead Market
DEVKOOT_SLR	Devkoot Solar Power Plant, NTPC Green Energy Ltd.
DCPP	Donga Mahua Captive Power Plant
DD&DNH	Daman and Diu & Dadar Nagar Haveli
DGEN MEGA POWER	DGEN Mega Power Project
DGPCL Bhutan	Druk Green Power Corporation Ltd., Bhutan
DHARIWAL POWER	Dhariwal Power Station
DIKCHU HEP	Dikchu Hydro-electric Project, Sikkim
DOYANG HEP	DoyangHydro Electric Project
DSM	Deviation Settlement Mechanism
DVC	Damodar Valley Corporation
EDEN_SLR	Eden RE Cite Private limited
EMCO	EMCO Energy Limited
ESPL_RADHANESDA	Electro Solaire Private Limited, Radhanesda
ESSAR POWER	Essar Power Limited
FORTUM1_PVGD	Fortum Finnsurya Energy Private Ltd, Pavagada Project 1
FORTUM2_PVGD	Fortum Finnsurya Energy Private Ltd, Pavagada Project 2
FRV_ANTP	Fotowatio Renewable Ventures, Anantapur
FRV_NPK	Fotowatio Renewable Ventures, NP Kunta
GIPCL_RADHANESDA	Gujarat Industries Power Company Ltd, Radhanesda
GIWEL_BHUJ	Green infra wind energy Limited, Bhuj
GIWEL_TCN	Green Infra Wind Energy Limited,Tuticorin
GMR CHHATTISGARH	GMR Chhattisgarh Energy Limited
GMR KAMALANGA	GMR Kamalanga Energy Ltd.
G-DAM	Green Day Ahead Market
GRIAN	Grian Energy Private Limited
GSECL P-II	GSECL Raghnesda Solar Park (Phase-II)
G-TAM	Green Term Ahead Market
HPX	Hindustan Power Exchange Limited
HP-DAM	High Price Day Ahead Market
HP-TAM	High Price Term Ahead Market
HVDC ALPD	Alipurduar High Voltage Direct Current Link
HVDC CHAMPA	Champa-Kurukshetra High Voltage Direct Current Link
HVDC PUS	PasauliHigh Voltage Direct Current Link
HVDC RAIGARH	Raigarh-Pugalur High Voltage Direct Current Link
IBEUL	Ind Bharat Energy Utkal Limited
IEX	Indian Energy Exchange Limited
IGSTPS	Indira Gandhi Super Thermal Power Station Jhajjar
IL&FS	Infrastructure Leasing & Financial Services Limited
INOX_BHUJ	INOX Wind Limited, Bhuj, Gujarat
J&K	Jammu & Kashmir
JAYPEE NIGRIE	Jaypee Nigrie Super Thermal Power Project

JHABUA POWER MP	Jhabua Thermal Power Project
JINDAL POWER	Jindal Power Limited
JINDAL STAGE-II	Jindal Power Ltd Stage II
JITPL	Jindal India Thermal Power Ltd.
JORETHANG	Jorethang Loop Hydroelectric Power Project
JSW_RENEW_2	JSW Renew Energy Two Limited
KAPP 3&4	Kakrapar Atomic Power Station Unit 3 & 4
KARCHAM WANGTOO	Karcham Wangtoo H.E. Project
KBUNL	Kanti Bijlee Utpadan Nigam Limited
KHURJA STPP	Khurja Super Thermal Power Plant
KORBA WEST POWER	Korba West Power Company Limited
KOTESHWAR	Koteshwar Hydro Power project
KREDL_PVGD	Karnataka Renewable Energy Development Ltd,Pavagada
KSK MAHANADI	KSK Mahanadi Power Ltd
KSMPL_SLR	Kilaj Solar (Maharashtra) Private Limited
KURICHU HEP	Kurichhu Hydro-electric Power Station, Bhutan
LANKO_AMK	LancoAmarkantak Power Private Limited
LANKO BUDHIL	LancoBudhil Hydro Power Private Limited
LANKOKONDAPALLY	Lanco Kondapally Power Private Limited
LOKTAK	Loktak Power Project
MAHINDRA_RUMS	Mahindra Rewa Ultra Mega Solar Project
MAHOBA_SLR	Mahoba Solar Power Project
MALANA	Malana Hydroelectric Plant
MANGDECHU HEP	Mangdechhu Hydroelectric Project, Mangdechhu River, Bhutan
Maruti Coal	Maruti Clean Coal and Power Limited
MB POWER	MB Power Ltd
MEENAKSHI	Meenakshi Energy Private Limited
MRPL	Mahindra Renewables Private Limited
MSEPL	Masaya Solar Energy Private Limited
MSRPL	Mega Solis Renewables Pvt. Ltd.
MTPS	TATA Power Mundra Thermal Power Station
MTPS II	Muzaffarpur Thermal Power Station – Stage II
MYTRAH_TCN	Mytrah Energy (India) Private Limited,Tuticorin
MU	Million Units
NAPP	Narora Atomic Power Plant
NCR ALLAHABAD	North Central Railway, Allahabad
NEEPCO	North Eastern Electric Power Corporation Limited
NEP	Nepal
NFL	National Fertilisers Limited
NHPC STATIONS	National Hydro Electric Power Corporation Ltd. Stations
NJPC	Nathpa Jhakri Hydroelectric Power Station
NLC	Neyveli Lignite Corporation Limited
NLDC	National Load Dispatch Centre
NOKHRA_STPP	Nokhra Solar Power Plant, NTPC Green Energy Ltd.
NPGC	Nabinagar Power Generating Company (Pvt.) Limited
NREL_DAYAPAR (W)	NREL-Dayapar Wind
NSPCL	NTPC - SAIL Power Company Private Limited
NTECLVallur	NTPC Tamil Nadu Energy Company Limited Vallur
NTPC_ANTP	NTPC Anantapur
NTPC STATIONS	National Thermal Power Corporation Ltd. Stations
NTPL	NLC Tamil Nadu Power Limited
NVVN	NTPC Vidyut Vyapar Nigam Limited
OCF	Order Carry Forward
ONEVOLT	Onevolt Energy Private Limited

ONGC Platana	ONGC Tripura Power Company
OPGC	Odisha Power Generation Corporation
ORANGE_TCN	Orange Renewable Power Pvt. Ltd, Tuticorin
OSTRO	Ostro Energy Private Limited
OTC	Over The Counter
PARAM_PVGD	Parampujya Solar Energy Private Ltd
PARE HEP	Pare hydroelectric project, Arunachal Pradesh
PXIL	Power Exchange India Limited
RAMPUR HEP	Rampur Hydro Electric Power Project
RANGIT HEP	Rangit Hydroelectric power project
RANGANADI HEP	Ranganadi Hydro Electric Power Project, Arunachal Pradesh
RAP-B	Rajasthan Atomic Power Plant-B
RAP-C	Rajasthan Atomic Power Plant-C
RAPP 7&8	Rajasthan Atomic Project 7&8
REC	Renewable Energy Certificate
REGL	Raigarh Energy Generation Limited
RENEW_BHACHAU	ReNew Power Limited, Bhachau
RENEW_BHUI	ReNew Power Limited, Bhuj
RENEW_PVGD	ReNew Wind Energy (TN2) Private Limited
RENEW_ROSHNI FATEHGARH	Renew Surya Roshni Private Limited-Fatehgarh-III PS
RENEW_SAAVAN	Renew Surya Aayan Private Limited
RENEW_SLR_BKN	Renew Solar Bikaner
RENEW_SOJAS	Renew Surya Ojas Private Limited-Wind
RENEW_SPRATAP	Renew Surya Pratap Private Limited
RENEW_SR_SLR	Renew Surya Ravi Private Limited (Solar)
RENEW_SVIHAAN	Renew Surya Vihaan Private Limited
RENEW_ROSHNI	Renew Surya Roshni Private Limited Koppal PS
RENEWJH_SLR	Renew Solar Energy (Jharkhand Three) Private Limited
RENEWURJA_SLR	ReNew Solar Urja Private Limited
RGPPL_IR	Ratnagiri Gas and Power Private Ltd., supply to Indian Railways
RGPPL_OTHER	Ratnagiri Gas and Power Private Limited
RISING_SLR	Rising Sun Energy Pvt. Ltd.
RLDC	Regional Load Dispatch Centre
RONGNICHU HEP	Rongnichu Hydro Electric Power Project
RPREL	Raipur Energen Limited
RSTPS_FSPP	NTPC Ramagundam STPS- Floating Solar PV Project
RTC	Round The Clock
RTM	Real Time Market
SasanUMPP	Sasan Ultra Mega Power Project
SB_SLR	Soft Bank Solar
SB6_POKARAN	SB Energy Six Private Limited, Pokaran
SBG CLEANTECH_SLR	SBG Cleantech Ltd
SBG_NPK	SB Energy Solar Private Limited, NP Kunta
SBG_PVGD	SB Energy Solar Private Limited, Pavagada
SBSR_SLR	SBSR Power Cleantech Eleven Private Limited
SEMBCORP	Sembcorp Gayatri Power Ltd
SIMHAPURI	Simhapuri Energy Private Limited
SKS Power	SKS Power Generation Chhattisgarh Limited
SESPL	Srijan Energy Systems Pvt. Ltd.
SINGOLI BHATWARI HEP	Singoli-Bhatwari Hydroelectric Project, Uttarakhand
SKRPL	Sitac Kabini Renewables Pvt. Ltd.
SPRNG_NPKUNTA	Spring Energy, NP Kunta
SPRING_PUGALUR	Spring Solar Power Private Limited, Pugalur
SUL	Sikkim Urja Limited



TALA HEP	Tala Hydroelectric Project, Bhutan
TASHIDENG HEP	Tashiding Hydro Electric Project, Sikkim
TATA_ANTP	TATA Power Anantapur
TATA_PVGD	Tata Power Renewable Energy Ltd
TATA_SLR	Tata Solar
TAM	Term Ahead Market
TEESTA STG3	Teesta Stage 3 Hydro Power Project
TEHRI	Tehri Hydro Electric Power Project
TESPL	Transition Energy Services Private Limited
THAR1_SLR	Thar Surya Ravi One Pvt Ltd
THERMAL POWERTECH	Thermal Powertech Corporation India Limited
TPREL_RADHANESDA	Tata Power Renewable Energy Limited, Radhanesda
TPSL	TP Saurya Limited
VINDHYACHAL HVDC	Vindhyachal High Voltage Direct Current Link
WA	Weighted Average
YARROW_PVGD	Yarrow Infra Structure Private Ltd

## 1. Introduction

1.1. A well-functioning electricity market requires an effective market monitoring process. The monthly report on short-term transactions of electricity, published by CERC since 2008 as part of its market monitoring process, provides a snapshot of key aspects of short-term transactions of electricity in India. Here, “short-term transactions of electricity” refers to the contracts of less than one year period for electricity transacted (inter-State) - through Trading Licensees, directly by the Distribution Licensees and on Power Exchanges (Indian Energy Exchange Ltd (IEX), Power Exchange India Ltd (PXIL) and Hindustan Power Exchange Ltd (HPX)). “DSM Volume” includes the volume recorded under Deviation Settlement Mechanism. The main objectives of the report are: (i) to analyse the volume and price of the short-term transactions of electricity; (ii) to assess the competition among the market players; (iii) to analyse the effect of congestion on the volume of electricity transacted through power exchanges; (iv) to provide information on volume and price of Renewable Energy Certificates (RECs) transacted through power exchanges; and (v) to disseminate all other relevant market information. The analysis of short-term transactions of electricity and DSM volume during the month of **May 2024** is presented in the following sections.

## 2. Volume of Short-term Transactions of Electricity and DSM

2.1. During May 2024, total electricity generation, excluding generation from renewable and captive power plants in India, was 144269.36 MU (Table-1). Of the total electricity generation, 15.22% was transacted through short-term and DSM, comprising of 7.60% through bilateral<sup>1</sup> (through Traders and Term-Ahead contracts on power exchanges, and directly between entities), followed by 5.73% through power exchanges {Day Ahead Market (DAM) (including G-DAM and HP-DAM) and Real Time Market (RTM)}, and 1.89% through DSM (Table-1 & Figure-1).

2.2. Of the total short-term transactions and DSM volume (21953.57 MU), 49.92% was transacted through bilateral (i.e. through Traders, Term-Ahead contracts on power exchanges and directly between companies), followed by 37.66% through power exchanges {DAM

---

<sup>1</sup> With change in the regime on implementation of GNA Regulations from 1<sup>st</sup> October 2023, the volume reported here is not strictly comparable to the volumes in previous months. Some discrepancies were identified by CERC in the data provided by NLDC which prompted further validation. The volume herein is computed after verification with the volumes reported by the Trading Licensees and the Power Exchanges, and are subject to further revision. The Commission has directed NLDC, vide letter dated 05.01.2024, to make necessary provisions to differentiate the type of transactions under GNA and T-GNA at the earliest. In the interim, some of the tables in the monthly reports have been temporarily discontinued.

(including G-DAM & HP-DAM) and RTM}, and 12.41% through DSM (Table-1 & Figure-2). The daily volume of power exchange transactions is shown in Table-28. Figure-4 shows the daily volume trend for power exchange transactions and DSM volume.

2.3. Of the total volume of electricity transacted through power exchanges, 38.66% of the volume was transacted in DAM (including G-DAM & HP-DAM), followed by 34.51% in Term Ahead Market (TAM) (including G-TAM & HP-TAM) and 26.84% in RTM (Figure-3).

2.4. The share of electricity traded by each trading licensee is given in Table-2 & Figure-5 shows the share of top 5 trading licensees. The volume of electricity transacted by the trading licensees includes bilateral transactions and transactions undertaken through power exchanges. There were 59 trading licensees as of May 2024. Of which, 35 trading licensees were engaged in short-term trading. The top 5 trading licensees, namely PTC India Ltd., NTPC Vidyut Vyapar Nigam Ltd., Adani Enterprises Ltd., Tata Power Trading Company (P) Ltd. and Manikaran Power Ltd., had a share of 81.10% in the total volume of electricity traded by all the licensees.

2.5. Herfindahl-Hirschman Index (HHI), a commonly accepted index to calculate market concentration, has been used to measure competition among trading licensees. An increase in the HHI generally indicates a decrease in competition and an increase in market concentration, and vice versa. The HHI below 0.15 indicates non-concentration, HHI between 0.15 and 0.25 indicates moderate concentration, and HHI above 0.25 indicates high concentration. The HHI has been computed based on the volume of electricity traded (inter-State & intra-State) by inter-State trading licensees, and it was 0.1709 for the month of May 2024, which indicates moderate concentration of market power (Table-2).

2.6. The volume of electricity transacted in the DAM of IEX and HPX was 4315.58 MU and 0.10 MU, respectively, while no electricity was transacted in the DAM of PXIL. The volume of total buy bids and sell bids was 7712.94 MU and 8632.43 MU, respectively in IEX, 0.10 MU and 7.55 MU, respectively in HPX. While the sell bids volume in PXIL was 8.53 MU, no buy bids were received at PXIL.

2.7. Of the total volume of electricity transacted in the DAM of IEX, the volume purchased by the neighbouring countries of India was 272.36 MU, while the volume sold by

the neighbouring countries was 15.96 MU, under the Cross Border Trade of electricity through power exchange (Table-35(a)). No Cross Border transaction of electricity was undertaken through PXIL and HPX.

2.8. The volume of electricity transacted in the G-DAM of IEX was 561.82 MU, while no electricity was transacted in the G-DAM of PXIL and HPX. The volume of total buy bids and sell bids was 1592.11 MU and 928.59 MU, respectively, in IEX. No bids were received in PXIL and HPX.

2.9. The volume of electricity transacted in the HP-DAM of IEX was 2.84 MU, while no electricity was transacted in the HP-DAM of PXIL and HPX. The volume of total buy bids and sell bids was 5.38 MU and 3151.61 MU, respectively, in IEX. No bids were received in PXIL and HPX.

2.10. The volume of electricity transacted in the RTM of IEX and HPX was 3351.66 MU, and 36.48 MU, respectively, while no electricity was transacted in the RTM of PXIL. The volume of total buy bids and sell bids was 5565.28 MU and 6545.31 MU, respectively in IEX, 46.98 MU and 38.17 MU, respectively in HPX. While the sell bids volume in PXIL was 0.35 MU, no buy bids were received at PXIL. The variation in the volume of buy bids and sell bids placed through power exchanges shows variation in the demand and supply position.

2.11. Of the total volume of electricity transacted in the RTM of IEX, the volume sold by the neighbouring countries of India was 18.66 MU, while the volume purchased was 45.47 MU, under the Cross Border Trade of electricity through power exchange (Table-35(b)). No Cross Border transaction of electricity was undertaken through PXIL and HPX.

2.12. The volume of electricity transacted in the TAM of IEX, PXIL and HPX was 1219.72 MU, 1507.44 MU and 1345.09 MU, respectively (Table-9, Table-10 & Table-11). The volume of electricity transacted in the Green Term Ahead Market (G-TAM) of IEX, PXIL and HPX was 47.47 MU, 13.00 MU and 103.64 MU, respectively (Table-12, Table-13 & Table-14).

2.13. The volume of electricity transacted in the HP-TAM of PXIL and HPX was 100.39 MU and 20.16 MU, respectively (Table-16 & Table-17). No volume was traded in the HP-TAM of IEX (Table-15).



### 3. Price of Short-term Transactions of Electricity and DSM charges

3.1. **Price of electricity transacted through Traders:** The minimum, maximum and weighted average sale prices for the electricity transacted through traders were ₹4.27/kWh, ₹10.00/kWh and ₹8.27/kWh, respectively (Table-3). The weighted average sale prices were also computed for the electricity transacted during Round the Clock (RTC), Peak and Off-peak periods separately, and the sale prices were ₹8.21/kWh, ₹9.93/kWh and ₹8.68/kWh, respectively (Table-4).

3.2. **Price of electricity transacted through Power Exchanges:** The minimum, maximum and weighted average prices for the electricity transacted in the DAM of IEX were ₹1.20/kWh, ₹10.00/kWh and ₹4.79/kWh, respectively. These prices in the DAM of HPX were ₹10.00/kWh, ₹10.00/kWh and ₹10.00/kWh respectively (Table-5). The minimum, maximum and weighted average prices for the electricity transacted in the G-DAM of IEX were ₹1.42/kWh, ₹10.00/kWh and ₹3.86/kWh, respectively (Table-6). The minimum, maximum and weighted average prices for the electricity transacted in the HP-DAM of IEX were ₹12.76/kWh, ₹15.00/kWh and ₹13.08/kWh, respectively (Table-7). The minimum, maximum and weighted average prices for the electricity transacted in the RTM of IEX were ₹0.55/kWh, ₹10.00/kWh and ₹4.60/kWh, respectively. The minimum, maximum and weighted average prices for the electricity transacted in the RTM of HPX were ₹10.00/kWh, ₹10.00/kWh and ₹10.00/kWh, respectively (Table-8). The weighted average price of electricity transacted in the TAM of IEX, PXIL and HPX was ₹8.50/kWh, ₹8.84/kWh and ₹9.26/kWh, respectively (Table-9, Table-10 and Table-11). The weighted average price of electricity transacted in the G-TAM of IEX, PXIL and HPX was ₹8.35/kWh, ₹3.99/kWh and ₹4.32/kWh, respectively (Table-12, Table-13 and Table-14). The weighted average price of electricity transacted in the HP-TAM of PXIL and HPX was ₹16.43/kWh and ₹14.92/kWh, respectively (Table-16 and Table-17). No electricity was transacted in DAM, G-DAM, HP-DAM & RTM of PXIL; G-DAM & HP-DAM of HPX; and in HP-TAM of IEX.

3.3. **DSM Charges:** The minimum, maximum and average charge under DSM was ₹1.40/kWh, ₹11.61/kWh and ₹5.58/kWh, respectively (Table-31).

3.4. The comparison of weighted average prices of electricity transacted through trading licensees and power exchanges (collective transactions) is shown in Figure-6. The daily prices of electricity transacted through various segments at power exchanges and their

comparison are shown in Table-29(a), (b), (c) & (d) and Figure-7. The daily volume and charges under DSM are shown in Table-31.

#### **4. Trading Margin**

4.1. As per the CERC (Procedure, Terms and Conditions for grant of trading licence and other related matters) Regulations 2020, the trading licensees are allowed to charge a trading margin of not less than 0 paise/kWh and upto 7 paise/kWh. The weighted average trading margin charged by the trading licensees for bilateral transactions during the month was ₹0.022/kWh.

#### **5. Volume of Short-term Transactions of Electricity (Regional Entity<sup>2</sup>-Wise)**

5.1. Of the total DAM transactions at power exchanges, the top 5 regional entities/states sold 30.99% of the volume, and these were Chhattisgarh, Himachal Pradesh, Jindal Power Ltd Stage II, Adani Power Limited - Raipur TPP and Essar Power Limited. The HHI for sellers in DAM was 0.0351, which indicates non-concentration of market (Table-18). The top 5 regional entities/states purchased 53.08% of the volume, and these were Rajasthan, Gujarat, Uttar Pradesh, Punjab and Uttarakhand. The HHI for buyers in DAM was 0.0802, which indicates non-concentration of market (Table-19).

5.2. Of the total G-DAM transactions at power exchanges, the top 5 regional entities/states sold 44.05% of the volume, and these were Adani Renewable Energy Holding Four Ltd., TP Saurya Limited Banderwala, Adani Green Energy Twenty Five B Limited (Infirm), Himachal Pradesh and Adani Solar Energy Jodhpur Two Limited. The HHI for sellers in G-DAM was 0.0635, which indicates non-concentration of market (Table-20). The top 5 regional entities/states purchased 63.02% of the volume, and these were Maharashtra, Punjab, Damodar Valley Corporation, Tamil Nadu and Arcelor Mittal Nippon Steel Hazira. The HHI for buyers in G-DAM was 0.1030, which indicates non-concentration of market (Table-21).

5.3. The total volume of HP-DAM transactions at power exchanges was sold by 3 regional entities/states and these were NTPC Stations (Western Region), Gujarat and Coastal Energen Private Limited. The HHI for sellers in HP-DAM was 0.6508, which indicates high concentration of market (Table-22). The total volume of HP-DAM transactions at power

---

<sup>2</sup> In case of a State, the entities which are “selling” also include generators connected to State Grid and the entities which are “buying” also include open access consumers.

exchanges was purchased by only 1 regional entities/states and it was West Bengal. The HHI for buyers in HP-DAM was 1.00, which indicates high concentration of market (Table-23).

5.4. Of the total RTM transactions at power exchanges, the top 5 regional entities/states sold 37.26% of the volume, and these were Madhya Pradesh, Karnataka, Chhattisgarh, Bihar and West Bengal. The HHI for sellers in RTM was 0.0418, which indicates non-concentration of market (Table-24). The top 5 regional entities/states purchased 57.06% of the volume, and these were Rajasthan, Punjab, Uttar Pradesh, Telangana and Tamil Nadu. The HHI for buyers in RTM was 0.0944, which indicates non-concentration of market (Table-25).

5.5. The total volume of net transactions through power exchanges (Regional entity-wise), is shown in Table-26 & 30. The top 5 electricity selling regional entities/states of power exchange transactions were Chhattisgarh, Himachal Pradesh, Karnataka, Madhya Pradesh and Jindal Power Ltd Stage II. The top 5 electricity purchasing regional entities/states of power exchange transactions were Rajasthan, Uttar Pradesh, Punjab, Gujarat and Telangana.

5.6. Of the total under-drawal/ over-injection volume under DSM in May 2024, the top 5 regional entities/states accounted for 24.33% of the volume, and these were Tamil Nadu, Delhi, Karnataka, Haryana and Punjab (Table-32). The top 5 regional entities/states under DSM accounted for 27.02% of the total over-drawal/ under-injection volume, and these were NTPC Stations (Northern Region), NTPC Stations (Western Region), NTPC Stations (Eastern Region), NTPC Stations (Southern Region) and Rajasthan (Table-33).

## **6. Congestion<sup>3</sup> on Inter-State Transmission Corridor for Day-Ahead Market and Real Time Market on Power Exchanges**

6.1. Power exchanges use a price discovery mechanism in which the aggregate demand and supply are matched to arrive at an unconstrained market price and volume. This process assumes that there is no congestion in the inter-State transmission system between different regions. However, in reality, the system operator (NLDC), in coordination with RLDCs,

---

<sup>3</sup> “Congestion” means a situation where the demand for transmission capacity exceeds the available transfer capability



limits the flow (due to congestion) in the inter-State transmission system. In such a situation, power exchanges adopt a mechanism called “Market Splitting”<sup>4</sup>.

6.2. The volume of electricity that could not be cleared due to congestion & other reasons and could not be transacted through power exchanges is the difference between unconstrained cleared volume and actual cleared volume. During the month of May 2024, congestion was experienced in DAM, G-DAM & RTM of IEX and RTM of HPX.

6.3. The volume of electricity that could not be cleared due to congestion in DAM, G-DAM & RTM of IEX was 0.01%, 0.05% and 0.21% of the unconstrained cleared volume, respectively. The volume of electricity that could not be cleared due to congestion in RTM of HPX was 3.57% of the unconstrained cleared volume. In terms of time, congestion occurred was 1.34% in DAM, 1.11% in G-DAM, 3.19% in RTM of IEX and 0.67% in RTM of HPX during the month. (Table-27).

## **7. Volume and Price of Renewable Energy Certificates (RECs)**

7.1. The concept of Renewable Energy Certificates (RECs) seeks to address the mismatch between the availability of renewable energy and the requirement of the obligated entities to meet their renewable purchase obligation by purchasing green attributes of renewable energy remotely located in the form of RECs. The REC mechanism is a market-based instrument to promote renewable sources of energy and the development of the electricity market.

7.2. One REC is equivalent to 1 MWh electricity injected into the grid from renewable energy sources. The REC is exchanged only in the power exchanges approved by CERC within the band of a floor price and forbearance (ceiling) price as notified by CERC from time to time. The first REC trading was held on power exchanges in May 2011.

---

<sup>4</sup>“Market Splitting” is a mechanism adopted by Power Exchanges, where the market is split in the event of transmission congestion, into predetermined (by NLDC) bid areas or zones, which are cleared individually at their respective area prices such that the energy balance in every bid area is reached based upon the demand and supply in individual bid areas and using the available transmission corridor capacity between various bid areas simultaneously. As a result of this market splitting the price of electricity in the importing region, where demand for electricity is more than supply, becomes relatively higher than the price of electricity in the exporting region.

7.3. The categorisation of RECs has been dispensed with on introduction of the concept of multiplier under the CERC (Terms and Conditions for Renewable Energy Certificates for Renewable Energy Generation) Regulations, 2022, brought into effect from 05.12.2022. Accordingly, the power exchanges deactivated the Solar and Non-Solar REC contract for trading w.e.f. December 2022. A new contract named “REC” has been made available for trading on the power exchanges. Further, RECs can also be exchanged through trading licensees as per the REC Regulations 2022.

7.4. The details of REC transactions for the month of May 2024 are shown in Table-34. The market clearing volume of RECs transacted on IEX, PXIL and HPX was 1054623, 320232 and 25000, respectively. The weighted average market clearing price of these RECs was ₹173/MWh in IEX, ₹163/MWh in PXIL and ₹165/MWh in HPX.

7.5. The gap between the volume of buy and sell bids of RECs placed through power exchanges shows the variation in demand for the RECs. The ratio of buy bids to sell bids was 0.17, 0.07 and 0.01 in IEX, PXIL and HPX, respectively.

7.6. The volume of RECs transacted through Trading Licensees in May 2024 was 3637. The weighted average trade price for the RECs transacted through traders was ₹223/MWh.

## **8. Inferences:**

- a) The percentage of short-term transactions of electricity and DSM volume to total electricity generation was 15.22%.
- b) Of the total short-term transactions and DSM volume (21953.57 MU), 49.92% was transacted through bilateral (i.e. through Traders, Term-Ahead contracts on power exchanges and directly between companies), followed by 37.66% through power exchanges {DAM (including G-DAM & HP-DAM) and RTM}, and 12.41% through DSM.
- c) Of the total volume of electricity transacted through power exchanges, 38.66% of the volume was transacted in DAM (including G-DAM & HP-DAM), followed by 34.51% in Term Ahead Market (TAM) (including G-TAM & HP-TAM) and 26.84% in RTM.

- d) The top 5 trading licensees had a share of 81.10% in the total volume traded by all the trading licensees.
- e) The Herfindahl Hirschman Index computed for the volume of electricity traded by trading licensees was 0.1709, indicating moderate concentration of market power.
- f) The weighted average sale price of electricity transacted through trading licensees was ₹8.27/kWh.
- g) The weighted average price of electricity transacted in DAM of IEX and HPX was ₹4.79/kWh and ₹10.00/kWh, while no electricity was transacted in DAM of PXIL. The weighted average price of electricity transacted in G-DAM of IEX was ₹3.86/kWh, while no electricity was transacted in G-DAM of PXIL and HPX. The weighted average price of electricity transacted in HP-DAM of IEX was ₹13.08/kWh, while no electricity was transacted in HP-DAM of PXIL and HPX. The weighted average price of electricity transacted in RTM of IEX and HPX was ₹4.60/kWh and ₹10.00/kWh, respectively, while no electricity was transacted in RTM of PXIL.
- h) The weighted average price of electricity transacted in TAM of IEX, PXIL and HPX was ₹8.50/kWh, ₹8.84/kWh and ₹9.26/kWh, respectively. The weighted average price of electricity transacted in G-TAM of IEX, PXIL and HPX was ₹8.35/kWh, ₹3.99/kWh and ₹4.32/kWh, respectively. The weighted average price of electricity transacted in HP-TAM of PXIL and HPX was ₹16.43/kWh and ₹14.92/kWh, respectively. No electricity was transacted in HP-TAM of IEX.
- i) The average charge under DSM was ₹5.58/kWh.
- j) The weighted average trading margin charged by the trading licensees for bilateral transactions was ₹0.022/kWh.
- k) The top 5 electricity selling regional entities/states of power exchange transactions were Chhattisgarh, Himachal Pradesh, Karnataka, Madhya Pradesh and Jindal Power Ltd Stage II. The top 5 electricity purchasing regional entities/states of power exchange transactions were Rajasthan, Uttar Pradesh, Punjab, Gujarat and Telangana.
- l) The top 5 under-drawing/ over-injecting regional entities/states under DSM were Tamil Nadu, Delhi, Karnataka, Haryana and Punjab. The top 5 over-drawing/ under-injecting

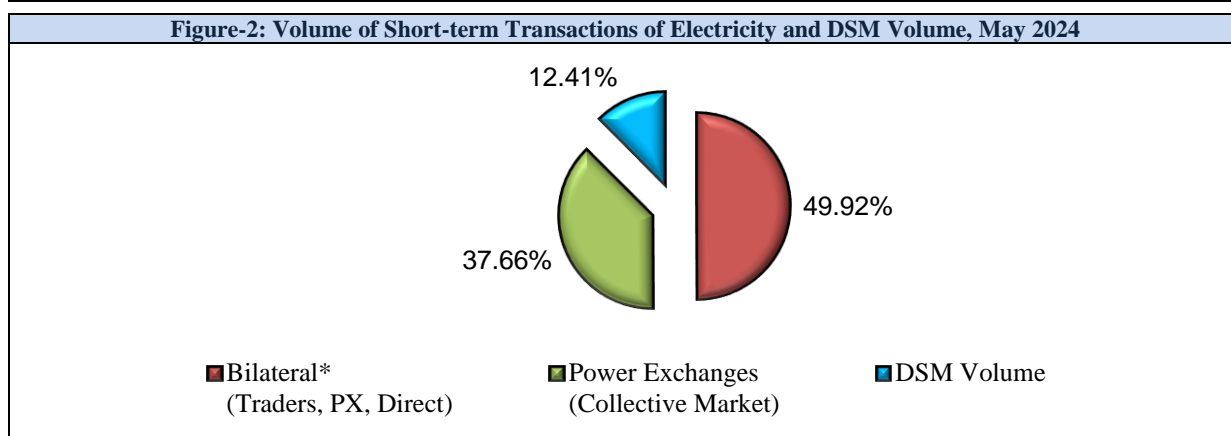
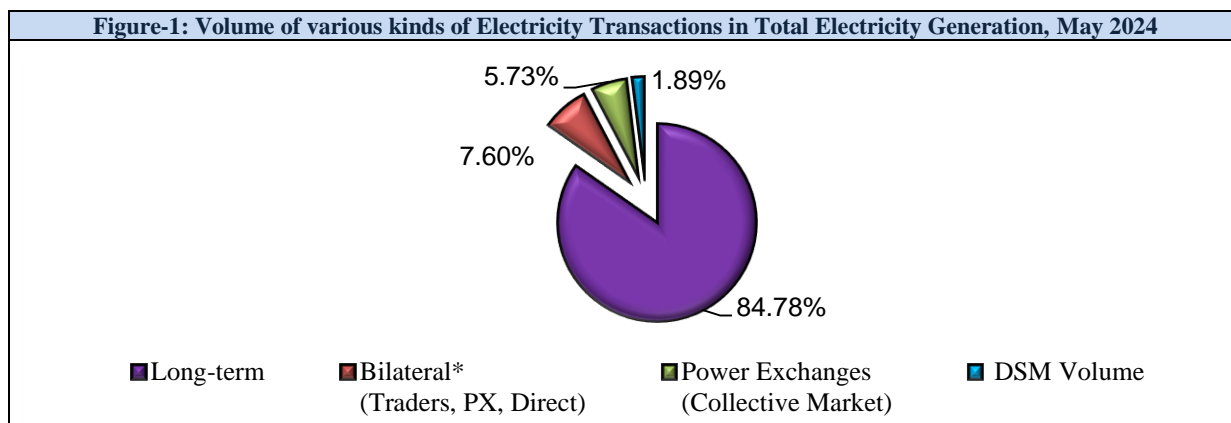
regional entities/states under DSM NTPC Stations (Northern Region), NTPC Stations (Western Region), NTPC Stations (Eastern Region), NTPC Stations (Southern Region) and Rajasthan.

- m) During the month of May 2024, congestion was experienced in DAM, G-DAM & RTM of IEX and RTM of HPX. The volume of electricity that could not be cleared due to congestion in DAM, G-DAM & RTM of IEX was 0.01%, 0.05% and 0.21% of the unconstrained cleared volume, respectively and in RTM of HPX it was 3.57% of the unconstrained cleared volume.
- n) The market clearing volume of RECs transacted on IEX, PXIL and HPX was 1054623, 320232 and 25000, respectively. The weighted average market clearing price of these RECs was ₹173/MWh in IEX, ₹163/MWh in PXIL and ₹165/MWh in HPX. The volume of RECs transacted through Trading Licensees in May 2024 was 3637. The weighted average trade price for the RECs transacted through traders was ₹223/MWh.

\*\*\*

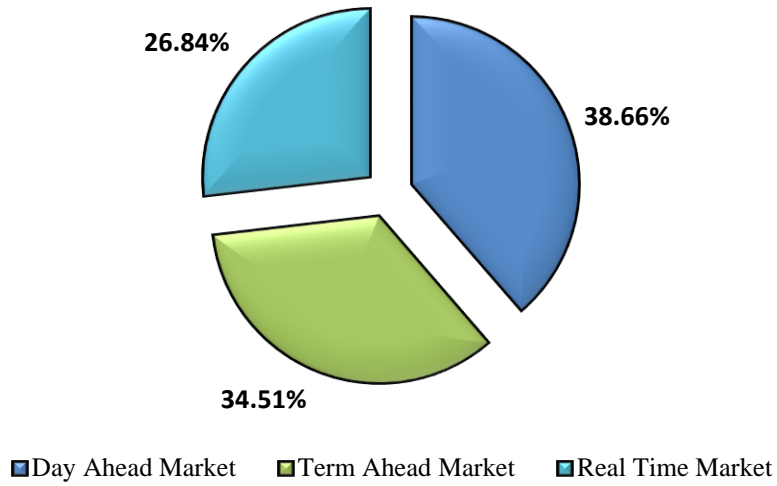
Table-1: VOLUME OF SHORT-TERM TRANSACTIONS OF ELECTRICITY AND DSM (ALL INDIA), MAY 2024				
Sr. No	Transaction	Volume (MU)	% to short-term transactions and DSM Volume	% to Total Generation
A	<b>Short-term transactions</b>			
1	Bilateral* (Traders, PX, Direct)	<b>10959.83</b>	<b>49.92</b>	<b>7.60</b>
2	Power Exchanges (Collective Market)	<b>8268.48</b>	<b>37.66</b>	<b>5.73</b>
	(i) IEX			
	(a) DAM	4315.58	19.66	2.99
	(b) RTM	3351.66	15.27	2.32
	(c) GDAM	561.82	2.56	0.39
	(d) HP-DAM	2.84	0.01	0.002
	(ii) PXIL			
	(a) DAM	0.00	0.00	0.00
	(b) RTM	0.00	0.00	0.00
	(c) GDAM	0.00	0.00	0.00
	(d) HP-DAM	0.00	0.00	0.00
	(ii) HPX			
	(a) DAM	0.10	0.0005	0.0001
	(b) RTM	36.48	0.17	0.03
	(c) GDAM	0.00	0.00	0.00
	(d) HP-DAM	0.00	0.00	0.00
B	<b>DSM Volume</b>	<b>2725.27</b>	<b>12.41</b>	<b>1.89</b>
<b>Total Short-term transactions and DSM</b>		<b>21953.57</b>	<b>-</b>	<b>15.22</b>
<b>Total Generation</b>		<b>144269.36</b>	<b>-</b>	<b>-</b>

Source: NLDC

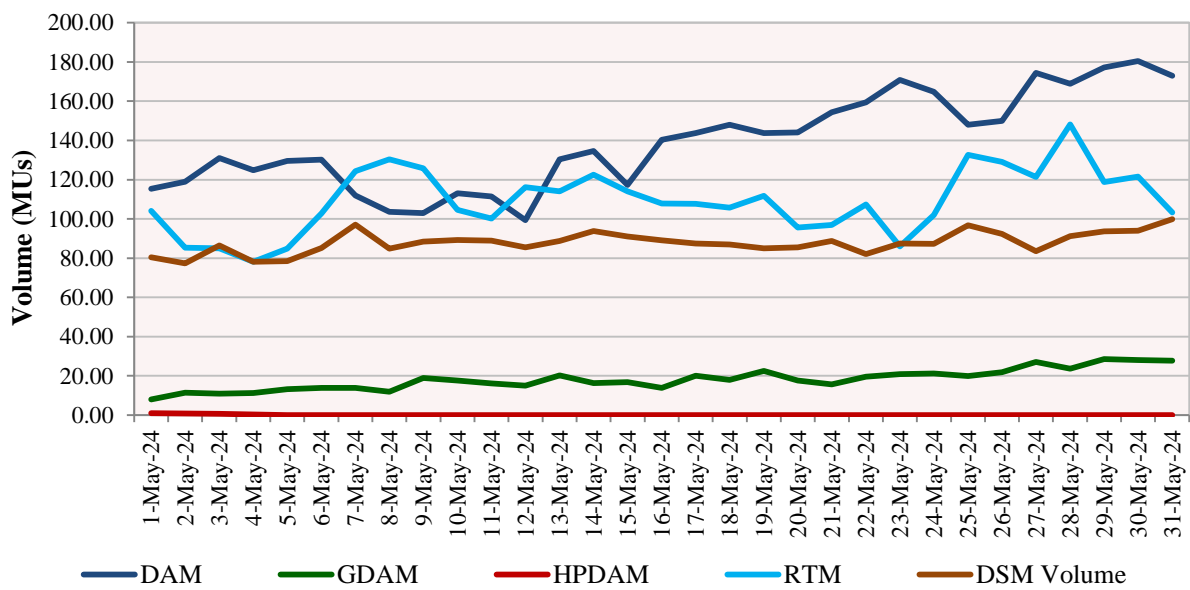


\* With change in the regime on implementation of GNA Regulations from 1<sup>st</sup> October 2023, the volume reported here is not strictly comparable to the volumes in previous months. Some discrepancies were identified by CERC in the data provided by NLDC which prompted further validation. The volume herein is computed after verification with the volumes reported by the Trading Licensees and the Power Exchanges, and may be subject to further revision. The Commission has directed NLDC, vide letter dated 05.01.2024, to make necessary provisions to differentiate the type of transactions under GNA and T-GNA at the earliest.

**Figure-3: Volume transacted in different markets segments on Power Exchanges, May 2024**



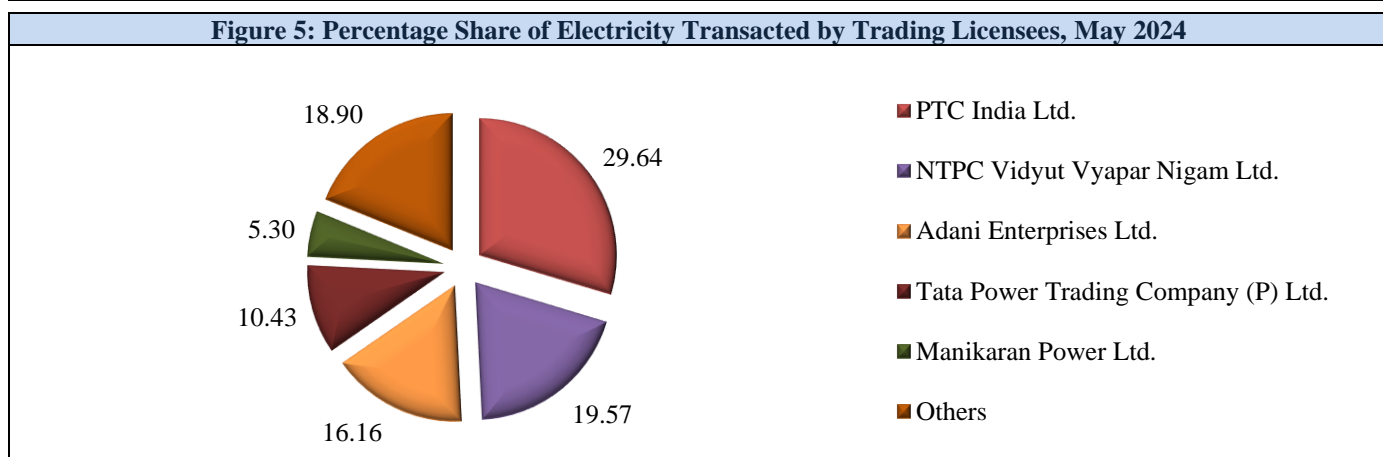
**Figure-4: Volume of Transactions on Power Exchanges and DSM Volume, May 2024 (Day-wise)**



<b>Table-2: PERCENTAGE SHARE OF ELECTRICITY TRANSACTED BY TRADING LICENSEES, MAY 2024</b>		
<b>Sr. No</b>	<b>Name of the Trading Licensee</b>	<b>% Share in total Volume traded by Trading Licensees</b>
1	PTC India Ltd.	29.64
2	NTPC Vidyut Vyapar Nigam Ltd.	19.57
3	Adani Enterprises Ltd.	16.16
4	Tata Power Trading Company (P) Ltd.	10.43
5	Manikaran Power Ltd.	5.30
6	Arunachal Pradesh Power Corporation (P) Ltd	4.93
7	GMR Energy Trading Ltd.	3.91
8	JSW Power Trading Company Ltd	1.93
9	Shree Cement Ltd.	1.31
10	Ambitious Power Trading Company Ltd.	1.01
11	Instinct Infra & Power Ltd.	0.90
12	RPG Power Trading Company Ltd.	0.76
13	Statkraft Markets Pvt. Ltd.	0.70
14	NHPC Limited	0.62
15	Greenko Energies Pvt Ltd	0.48
16	Kreate Energy (I) Pvt. Ltd.	0.47
17	Adarsh Stainless Pvt. Ltd.	0.46
18	Kundan International Pvt. Ltd.	0.31
19	Saranyu Power Trading Private Limited	0.28
20	Ideal Energy Solution Pvt. Ltd.	0.17
21	Powerfull Energy Trading Pvt. Ltd.	0.11
22	Energedge Power Trading Pvt. Ltd.	0.11
23	SJVN Ltd.	0.10
24	NLC India Ltd.	0.08
25	Abja Power Private Limited	0.08
26	Instant Ventures Pvt. Ltd.	0.07
27	Gita Power & Infrastructure Private Limited	0.03
28	Refex Industries Ltd.	0.02
29	Customized Energy Solutions India (P) Ltd.	0.02
30	REL Power Trading LLP	0.02
31	Phillip Commodities India (P) Ltd.	0.01
32	Shubheksha Advisors Pvt. Ltd.	0.003
33	Altium Energie Private Limited	0.001
34	Shell Energy Marketing and Trading India Pvt. Ltd.	0.001
35	Saini Power Transactor	0.0004
<b>TOTAL</b>		<b>100.00%</b>
<b>Top 5 trading licensees</b>		<b>81.10%</b>
<b>Herfindahl-Hirschman Index (HHI)</b>		<b>0.1709</b>

*Note 1: Volume of electricity transacted by the trading licensees includes bilateral transactions (inter-state & intra-state) and the transactions undertaken through power exchanges.*

*Source: Information submitted by trading licensees*



**Table-3: PRICE OF ELECTRICITY TRANSACTED THROUGH TRADERS, MAY 2024**

Sr.No	Item	Sale Price of Traders (₹/kWh)
1	Minimum	4.27
2	Maximum	10.00
3	Weighted Average	8.27

Source: Information submitted by trading licensees

**Table-4: PRICE OF ELECTRICITY TRANSACTED THROUGH TRADERS (TIME-WISE), MAY 2024**

Sr.No	Period of Trade	Sale Price of Traders (₹/kWh)
1	RTC	8.21
2	PEAK	9.93
3	OFF PEAK	8.68

Source: Information submitted by trading licensees

**Table-5: PRICE OF ELECTRICITY TRANSACTED IN DAY AHEAD MARKET, MAY 2024**

Sr.No	ACP	Price in IEX (₹/kWh)	Price in PXIL (₹/kWh)	Price in HPX (₹/kWh)
1	Minimum	1.20	-	10.00
2	Maximum	10.00	-	10.00
3	Weighted Average	4.79	-	10.00

Source: IEX, PXIL and HPX

**Table-6: PRICE OF ELECTRICITY TRANSACTED IN GREEN DAY AHEAD MARKET, MAY 2024**

Sr.No	ACP	Price in IEX (₹/kWh)	Price in PXIL (₹/kWh)	Price in HPX (₹/kWh)
1	Minimum	1.42	-	-
2	Maximum	10.00	-	-
3	Weighted Average	3.86	-	-

Source: IEX, PXIL and HPX

**Table-7: PRICE OF ELECTRICITY TRANSACTED IN HIGH PRICE DAY AHEAD MARKET, MAY 2024**

Sr.No	ACP	Price in IEX (₹/kWh)	Price in PXIL (₹/kWh)	Price in HPX (₹/kWh)
1	Minimum	12.76	-	-
2	Maximum	15.00	-	-
3	Weighted Average	13.08	-	-

Source: IEX, PXIL and HPX

**Table-8: PRICE OF ELECTRICITY TRANSACTED IN REAL TIME MARKET, MAY 2024**

Sr.No	ACP	Price in IEX (₹/kWh)	Price in PXIL (₹/kWh)	Price in HPX (₹/kWh)
1	Minimum	0.55	-	10.00
2	Maximum	10.00	-	10.00
3	Weighted Average	4.60	-	10.00

Source: IEX, PXIL and HPX

**Table-9: VOLUME AND PRICE OF ELECTRICITY IN TERM AHEAD MARKET OF IEX, MAY 2024**

Sr.No	Term ahead contracts	Actual Scheduled Volume (MU)	Weighted Average Price (₹/kWh)
1	Intra-Day Contracts	45.16	9.99
2	Day Ahead Contingency Contracts	262.63	9.15
3	Daily Contracts	587.91	8.12
4	Monthly Contracts	196.55	8.20
5	Any Day Single Sided Contracts	127.47	8.86
	<b>Total</b>	<b>1219.72</b>	<b>8.50</b>

Source: IEX

**Table-10: VOLUME AND PRICE OF ELECTRICITY IN TERM AHEAD MARKET OF PXIL, MAY 2024**

Sr.No	Term ahead contracts	Actual Scheduled Volume (MU)	Weighted Average Price (₹/kWh)
1	Intra-Day Contracts	46.84	9.77
2	Day Ahead Contingency Contracts	456.99	8.74
3	Daily Contracts	344.84	8.50
4	Monthly Contracts	658.76	9.01
	<b>Total</b>	<b>1507.44</b>	<b>8.84</b>

Source: PXIL



**Table-11: VOLUME AND PRICE OF ELECTRICITY IN TERM AHEAD MARKET OF HPX, MAY 2024**

Sr.No	Term ahead contracts	Actual Scheduled Volume (MU)	Weighted Average Price (₹/kWh)
1	Intra-Day Contracts	48.81	9.97
2	Day Ahead Contingency Contracts	331.61	9.81
3	Daily Contracts	700.28	9.04
4	Monthly Contracts	234.87	8.97
5	Any Day Single Sided Contracts	29.53	9.31
	<b>Total</b>	<b>1345.09</b>	<b>9.26</b>

Source: HPX

**Table-12: VOLUME AND PRICE OF ELECTRICITY IN GREEN TAM OF IEX, MAY 2024**

Sr. No	Green Term ahead contracts	Actual Scheduled Volume (MU)	Weighted Average Price (₹/kWh)
1	Day Ahead Contingency Contracts	1.66	10.00
2	Daily Contracts	4.08	7.30
3	Monthly Contracts	39.43	8.58
4	Any Day Single Sided Contracts	2.30	4.96
	<b>Total</b>	<b>47.47</b>	<b>8.35</b>

Source: IEX

**Table-13: VOLUME AND PRICE OF ELECTRICITY IN GREEN TAM OF PXIL, MAY 2024**

Sr. No	Green Term ahead contracts	Actual Scheduled Volume (MU)	Weighted Average Price (₹/kWh)
1	Day Ahead Contingency Contracts	10.98	3.55
2	Any Day Single Sided Contracts	2.02	6.35
	<b>Total</b>	<b>13.00</b>	<b>3.99</b>

Source: PXIL

**Table-14: VOLUME AND PRICE OF ELECTRICITY IN GREEN TAM OF HPX, MAY 2024**

Sr. No	Green Term ahead contracts	Actual Scheduled Volume (MU)	Weighted Average Price (₹/kWh)
1	Day Ahead Contingency Contracts	94.71	3.90
2	Any Day Single Sided Contracts	8.93	8.85
	<b>Total</b>	<b>103.64</b>	<b>4.32</b>

Source: HPX

**Table-15: VOLUME AND PRICE OF ELECTRICITY IN HIGH PRICE TAM OF IEX, MAY 2024**

Sr. No	High Price Term ahead contracts	Actual Scheduled Volume (MU)	Weighted Average Price (₹/kWh)
1	No Trade	-	-
	<b>Total</b>	-	-

Source: IEX

**Table-16: VOLUME AND PRICE OF ELECTRICITY IN HIGH PRICE TAM OF PXIL, MAY 2024**

Sr. No	High Price Term ahead contracts	Actual Scheduled Volume (MU)	Weighted Average Price (₹/kWh)
1	Intra-Day Contracts	11.44	15.06
2	Day Ahead Contingency Contracts	3.75	15.00
3	Daily Contracts	48.00	17.98
4	Monthly Contracts	37.20	15.00
	<b>Total</b>	<b>100.39</b>	<b>16.43</b>

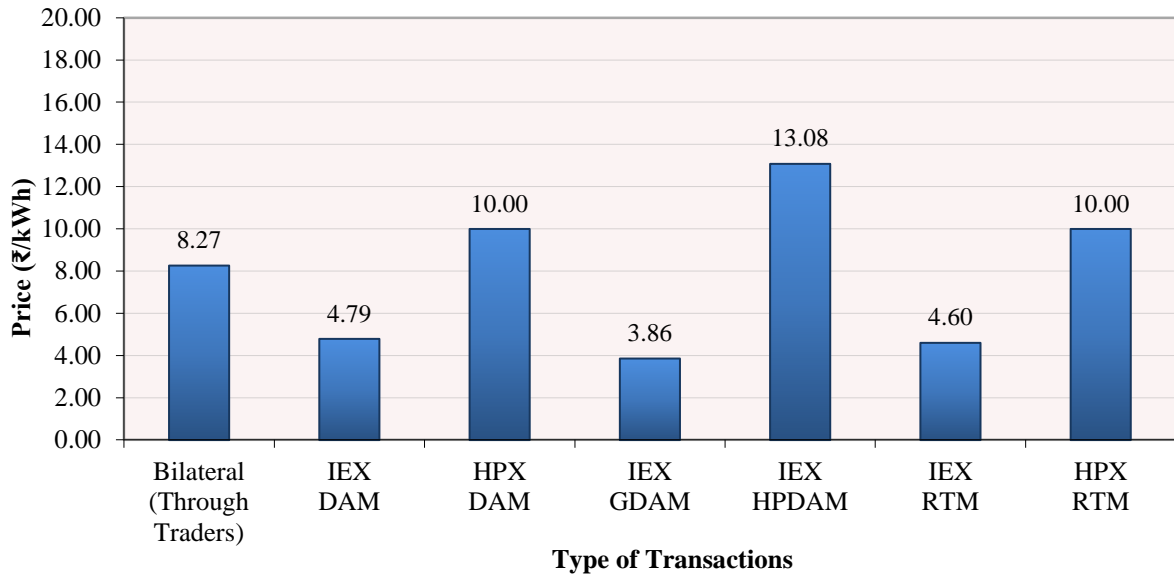
Source: PXIL

**Table-17: VOLUME AND PRICE OF ELECTRICITY IN HIGH PRICE TAM OF HPX, MAY 2024**

Sr. No	High Price Term ahead contracts	Actual Scheduled Volume (MU)	Weighted Average Price (₹/kWh)
1	Intra-Day Contracts	1.56	14.00
2	Daily Contracts	18.60	15.00
	<b>Total</b>	<b>20.16</b>	<b>14.92</b>

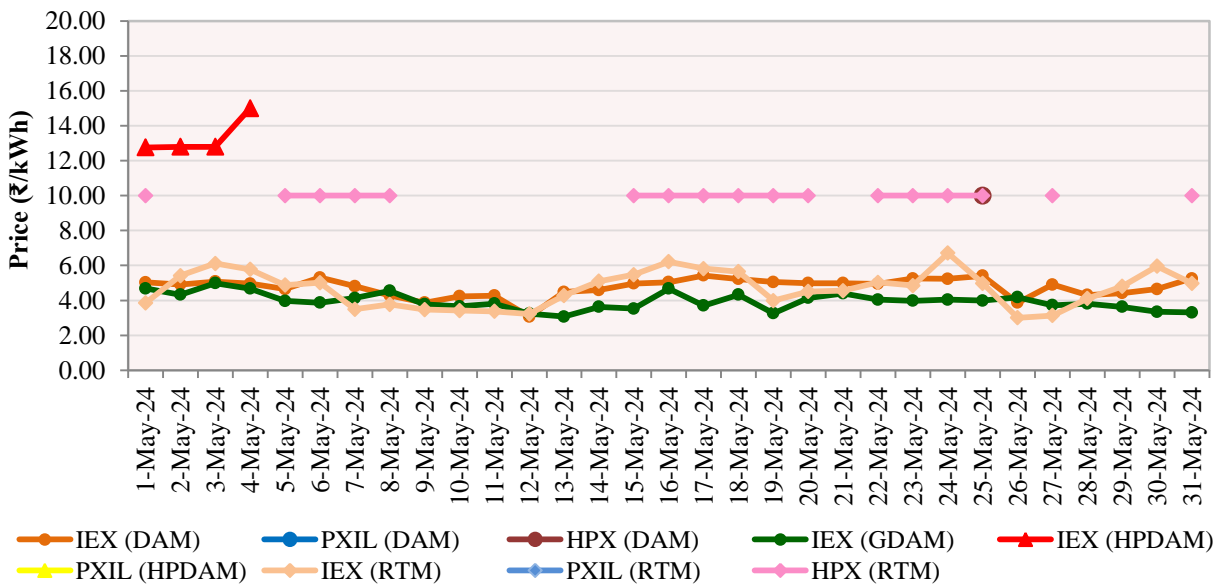
Source: HPX

**Figure-6: Weighted Average Price of Short-term Transactions of Electricity, May 2024**



*Note: No electricity was transacted in DAM of PXIL, G-DAM of PXIL & HPX, HP-DAM of PXIL & HPX and in RTM of PXIL during May 2024*

**Figure-7: Weighted Average Price of Short-term Transactions of Electricity, May 2024 (Day-wise)**



*Note: No electricity was transacted in DAM of PXIL, G-DAM of PXIL & HPX, HP-DAM of PXIL & HPX and in RTM of PXIL during May 2024*

**Table-18: VOLUME OF ELECTRICITY SOLD IN DAY AHEAD MARKET THROUGH POWER EXCHANGES, MAY 2024**

<b>Name of the Entity</b>	<b>Volume of Sale (MUs)</b>	<b>% of Volume</b>
CHHATTISGARH	495.96	11.49
HIMACHAL PRADESH	304.68	7.06
JINDAL STAGE-II	203.95	4.73
ARTPP	173.93	4.03
ESSAR POWER	158.86	3.68
KARNATAKA	155.99	3.61
DB POWER	137.93	3.20
JAYPEE NIGRIE	137.33	3.18
MAHARASHTRA	124.29	2.88
GUJARAT	113.75	2.64
DELHI	111.29	2.58
HARYANA	97.96	2.27
SEMBCORP	95.20	2.21
KARCHAM WANGTOO	95.17	2.21
KERALA	83.79	1.94
JITPL	80.50	1.87
JINDAL POWER	79.52	1.84
AD HYDRO	73.25	1.70
NTPC STATIONS-ER	73.09	1.69
WEST BENGAL	68.57	1.59
ADANI_4RE	67.95	1.57
UTTAR PRADESH	66.44	1.54
RAIGARH_ADANI	65.64	1.52
DCPP	65.47	1.52
ACBIL	59.49	1.38
TELANGANA	52.22	1.21
ADANI_S_RJ2	46.68	1.08
RENEW_SPRATAP	46.30	1.07
MP	46.08	1.07
RENEW_SR_SLR	44.73	1.04
ADANI_WIND	40.31	0.93
ASEJTL_SLR	39.85	0.92
GOA	37.84	0.88
NTPC STATIONS-NR	35.93	0.83
ODISHA	34.17	0.79
ADEPT	32.64	0.76
ADANI GREEN_25B (INFIRM)	31.14	0.72
DEVKOOT_SLR	29.01	0.67
SKS POWER	28.70	0.67
ANDHRA PRADESH	28.15	0.65
RAJASTHAN	27.04	0.63
PONDICHERRY	26.39	0.61
SAINJ HEP	25.92	0.60
ONEVOLT	25.59	0.59
NTPC STATIONS-SR	21.95	0.51
SIMHAPURI	21.03	0.49
SORANG HEP	20.96	0.49
IBEUL	20.37	0.47
NPGC	20.36	0.47
DHARIWAL POWER	19.85	0.46
TAMIL NADU	19.71	0.46
DVC	18.26	0.42
RENEW_SOJAS	17.22	0.40
PUNJAB	16.01	0.37

CHANDIGARH	15.17	0.35
NEPAL(NVVN)	14.28	0.33
BIHAR	13.20	0.31
RENEW_ROSHNI FATEHGARH	12.43	0.29
MB POWER	11.68	0.27
RKM POWER	11.62	0.27
BALCO	10.59	0.25
KBUNL	9.93	0.23
BRBCL,NABINAGAR	9.59	0.22
MEGHALAYA	8.56	0.20
SINGOLI BHATWARI HEP	8.20	0.19
RENERGY5_WIND	8.18	0.19
GRIAN	8.08	0.19
DGEN MEGA POWER	7.93	0.18
MARUTI COAL	7.73	0.18
OSTRO Hiriyur	7.58	0.18
ADANI_W_KUTCHH4 (INFIRM)	7.19	0.17
IL&FS	6.66	0.15
ADANI GREEN_26B (INFIRM)	6.39	0.15
JHABUA POWER_MP	6.36	0.15
ASSAM	6.25	0.14
TPSL BANDERWALA	5.97	0.14
MIZORAM	5.80	0.13
ADANIRE_55 (INFIRM)	5.71	0.13
IGSTPS	5.12	0.12
LANCO BUDHIL	3.89	0.09
J & K	3.47	0.08
TESPL	2.78	0.06
GMR KAMALANGA	2.58	0.06
ADANI GREEN_25A (INFIRM)	2.57	0.06
COASTGEN	2.18	0.05
NTPC STATIONS-NER	2.03	0.05
NTPC STATIONS-WR	1.80	0.04
BASOCHHU HEP	1.41	0.03
SIKKIM	1.32	0.03
ONGC PALATANA	1.31	0.03
EMCO	1.22	0.03
SHREE CEMENT	1.13	0.03
MTPS	0.80	0.02
NETCL VALLUR	0.76	0.02
NLC	0.50	0.01
NAGALAND	0.45	0.01
ADANI GREEN_26A (INFIRM)	0.27	0.01
NEP	0.27	0.01
KSK MAHANADI	0.24	0.01
NANI VIRANI_W	0.03	0.001
SERENTICA RE4	0.03	0.001
<b>Total</b>	<b>4315.68</b>	<b>100.00</b>
<b>Volume sold by top 5 Regional Entities</b>	<b>1337.38</b>	<b>30.99</b>
<b>Herfindahl-Hirschman Index</b>		<b>0.0351</b>

**Table-19: VOLUME OF ELECTRICITY PURCHASED IN DAY AHEAD MARKET THROUGH POWER EXCHANGES, MAY 2024**

<b>Name of the Entity</b>	<b>Volume of Purchase (MUs)</b>	<b>% of Volume</b>
RAJASTHAN	715.91	16.59
GUJARAT	600.69	13.92
UTTAR PRADESH	450.25	10.43
PUNJAB	270.86	6.28
UTTARAKHAND	252.99	5.86
HARYANA	228.34	5.29
TELANGANA	216.66	5.02
WEST BENGAL	191.87	4.45
TAMIL NADU	185.84	4.31
ANDHRA PRADESH	155.16	3.60
MAHARASHTRA	153.30	3.55
NEPAL(NVVN)	109.82	2.54
ODISHA	103.76	2.40
BIHAR	93.80	2.17
DELHI	84.66	1.96
NEA-Bihar	77.39	1.79
DGPCL Bhutan	68.24	1.58
DD&DNH	61.32	1.42
KARNATAKA	48.02	1.11
MP	41.76	0.97
HIMACHAL PRADESH	40.98	0.95
AMPS Hazira	32.26	0.75
GOA	17.85	0.41
NEP	16.92	0.39
KERALA	16.91	0.39
CHANDIGARH	12.24	0.28
J & K	12.11	0.28
ASSAM	10.67	0.25
NCR ALLAHABAD	10.16	0.24
MANIPUR	7.89	0.18
JHARKHAND	6.92	0.16
SIKKIM	4.86	0.11
MEGHALAYA	4.66	0.11
TRIPURA	3.53	0.08
NAGALAND	3.02	0.07
MB POWER	2.32	0.05
JHABUA POWER_MP	1.01	0.02
BALCO	0.38	0.01
CHHATTISGARH	0.33	0.01
PONDICHERRY	0.02	0.0004
<b>TOTAL</b>	<b>4315.68</b>	<b>100.00</b>
<b>Volume purchased by top 5 Regional Entities</b>	<b>2290.70</b>	<b>53.08</b>
<b>Herfindahl-Hirschman Index</b>		<b>0.0802</b>

**Table-20: VOLUME OF ELECTRICITY SOLD IN GREEN DAY AHEAD MARKET THROUGH POWER EXCHANGES, MAY 2024**

<b>Name of the Entity</b>	<b>Volume of Sale (MUs)</b>	<b>% of Volume</b>
ADANI_4RE	94.88	16.89
TPSL BANDERWALA	48.49	8.63
ADANI GREEN_25B (INFIRM)	39.00	6.94
HIMACHAL PRADESH	33.31	5.93
ASEJTL_SLR	31.77	5.66
MP	29.13	5.18
ADANI_WIND	23.53	4.19
ANDHRA PRADESH	23.46	4.18
UTTAR PRADESH	23.10	4.11
RISING_SLR	19.84	3.53
AMPLUS_AGES	18.35	3.27
UTTARAKHAND	17.16	3.05
KARNATAKA	17.10	3.04
MAHARASHTRA	16.02	2.85
AYANA_RP3	13.46	2.40
ADANI_S_RJ2	11.77	2.10
CONTINNUM PT	10.68	1.90
WEST BENGAL	8.27	1.47
RENEW_SR_SLR	7.83	1.39
RENEW_SOJAS	7.54	1.34
ADANIRE_55 (INFIRM)	6.77	1.21
ADANI_W_KUTCHH4 (INFIRM)	6.58	1.17
RENEW_ROSHNI FATEHGARH	6.48	1.15
RAJASTHAN	6.28	1.12
TESPL	6.17	1.10
SINGOLI BHATWARI HEP	6.02	1.07
ADANI GREEN_26B (INFIRM)	5.68	1.01
OSTRO Hiriyur	4.94	0.88
RENERGY5_WIND	4.60	0.82
NANI VIRANI_W	4.52	0.80
JSW_RENEW_2	4.37	0.78
J & K	2.13	0.38
ADANI GREEN_25A (INFIRM)	1.96	0.35
ADANI GREEN_26A (INFIRM)	0.21	0.04
DELHI	0.21	0.04
SERENTICA RE4	0.20	0.04
<b>Total</b>	<b>561.82</b>	<b>100.00</b>
<b>Volume sold by top 5 Regional Entities</b>	<b>247.46</b>	<b>44.05</b>
<b>Herfindahl-Hirschman Index</b>		<b>0.0635</b>

**Table-21: VOLUME OF ELECTRICITY PURCHASED IN GREEN DAY AHEAD MARKET THROUGH POWER EXCHANGES, MAY 2024**

<b>Name of the Entity</b>	<b>Volume of Purchase (MUs)</b>	<b>% of Volume</b>
MAHARASHTRA	104.04	18.52
PUNJAB	89.37	15.91
DVC	65.07	11.58
TAMIL NADU	50.20	8.94
AMPS Hazira	45.39	8.08
UTTAR PRADESH	36.79	6.55
NCR ALLAHABAD	29.57	5.26
DELHI	29.55	5.26
ODISHA	28.17	5.01
JHARKHAND	17.69	3.15
KARNATAKA	16.93	3.01
GUJARAT	13.06	2.32
HARYANA	8.31	1.48
KERALA	7.39	1.32
TELANGANA	5.90	1.05
ANDHRA PRADESH	5.04	0.90
BALCO	4.94	0.88
MP	4.26	0.76
CHHATTISGARH	0.13	0.02
HIMACHAL PRADESH	0.01	0.00
DD&DNH	0.01	0.00
<b>TOTAL</b>	<b>561.82</b>	<b>100.00</b>
<b>Volume purchased by top 5 Regional Entities</b>	<b>354.07</b>	<b>63.02</b>
<b>Herfindahl-Hirschman Index</b>		<b>0.1030</b>

**Table-22: VOLUME OF ELECTRICITY SOLD IN HIGH PRICE DAY AHEAD MARKET THROUGH POWER EXCHANGES, MAY 2024**

<b>Name of the Entity</b>	<b>Volume of Sale (MUs)</b>	<b>% of Volume</b>
NTPC STATIONS-WR	2.25	78.99
GUJARAT	0.44	15.38
COASTGEN	0.160	5.63
<b>Total</b>	<b>2.84</b>	<b>100.00</b>
<b>Volume sold by top 5 Regional Entities</b>	<b>2.84</b>	<b>100.00</b>
<b>Herfindahl-Hirschman Index</b>		<b>0.6508</b>

**Table-23: VOLUME OF ELECTRICITY PURCHASED IN HIGH PRICE DAY AHEAD MARKET THROUGH POWER EXCHANGES, MAY 2024**

<b>Name of the Entity</b>	<b>Volume of Purchase (MUs)</b>	<b>% of Volume</b>
WEST BENGAL	2.84	100.00
<b>TOTAL</b>	<b>2.84</b>	<b>100.00</b>
<b>Volume purchased by top 5 Regional Entities</b>	<b>2.84</b>	<b>100.00</b>
<b>Herfindahl-Hirschman Index</b>		<b>1.0000</b>



**Table-24: VOLUME OF ELECTRICITY SOLD IN REAL TIME MARKET THROUGH POWER EXCHANGES, MAY 2024**

<b>Name of the Entity</b>	<b>Volume of Sale (MUs)</b>	<b>% of Volume</b>
MP	309.51	9.13
KARNATAKA	308.08	9.09
CHHATTISGARH	229.63	6.78
BIHAR	211.14	6.23
WEST BENGAL	203.97	6.02
HIMACHAL PRADESH	195.93	5.78
ASSAM	150.12	4.43
ANDHRA PRADESH	125.61	3.71
MAHARASHTRA	99.11	2.93
TELANGANA	81.77	2.41
HARYANA	75.57	2.23
DELHI	73.13	2.16
KERALA	69.87	2.06
ODISHA	64.32	1.90
J & K	62.96	1.86
UTTAR PRADESH	60.90	1.80
NTPC STATIONS-WR	56.54	1.67
PUNJAB	56.26	1.66
GUJARAT	53.08	1.57
JHARKHAND	43.08	1.27
NTPC STATIONS-SR	40.60	1.20
NTPC STATIONS-ER	38.59	1.14
TAMIL NADU	35.92	1.06
NTPC STATIONS-NR	35.43	1.05
SEBPCORP	34.96	1.03
TESPL	34.51	1.02
RENEW_SOJAS	33.07	0.98
SERENTICA RE4	32.98	0.97
DVC	30.07	0.89
ARTPP	27.24	0.80
NEEPCO STATIONS	25.28	0.75
PONDICHERRY	24.20	0.71
NLC	23.84	0.70
MTPS	22.61	0.67
ARUNACHAL PRADESH	19.46	0.57
NEPAL(NVVN)	18.27	0.54
AYANA_RP3	16.80	0.50
TRIPURA	16.15	0.48
RENEW_SPRATAP	15.18	0.45
UTTARAKHAND	15.07	0.44
BALCO	14.90	0.44
MB POWER	14.00	0.41
SKS POWER	13.78	0.41
ADANI_WIND	13.50	0.40
NREL_DAYAPAR (W)	13.39	0.40
JHABUA POWER_MP	12.13	0.36
ESSAR POWER	11.48	0.34
MANIPUR	10.93	0.32
KARCHAM WANGTOO	10.07	0.30
ADHUNIK POWER LTD	9.76	0.29
RAJASTHAN	9.44	0.28
JINDAL STAGE-II	9.04	0.27
TPSL BANDERWALA	8.61	0.25
AD HYDRO	8.13	0.24
ADANI_4RE	7.55	0.22
JITPL	7.54	0.22
SORANG HEP	7.17	0.21
RKM POWER	7.10	0.21

MEGHALAYA	6.57	0.19
SINGOLI BHATWARI HEP	6.56	0.19
SIMHAPURI	6.21	0.18
LANKO KONDAPALLI	5.78	0.17
GOA	5.66	0.17
SASAN UMPP	5.39	0.16
DB POWER	4.87	0.14
NPGC	4.63	0.14
RAIGARH_ADANI	4.43	0.13
ACBIL	4.42	0.13
IGSTPS	4.41	0.13
SAINJ HEP	3.97	0.12
JINDAL POWER	3.84	0.11
DCPP	3.77	0.11
SIKKIM	3.74	0.11
NETCL VALLUR	3.64	0.11
DGEN MEGA POWER	3.61	0.11
DHARIWAL POWER	3.40	0.10
ASEJTL_SLR	3.30	0.10
NTPC STATIONS-NER	3.23	0.10
RENEW_SR_SLR	2.82	0.08
NOKHRA_STPP	2.58	0.08
NAGALAND	2.49	0.07
MARUTI COAL	2.46	0.07
SERENTICA RE1 (INFIRM)	2.36	0.07
AMP_GREEN6	2.25	0.07
IL&FS	1.93	0.06
TRN ENERGY	1.68	0.05
OSTRO Hiriyur	1.60	0.05
RENEW_ROSHNI FATEHGARH	1.44	0.04
ONGC PALATANA	1.29	0.04
DEVKOOT_SLR	1.27	0.04
ADANI GREEN_25B (INFIRM)	1.21	0.04
EMCO	1.16	0.03
IBEUL	1.15	0.03
CHANDIGARH	1.14	0.03
AMPLUS_AGES	1.11	0.03
ADANI_S_RJ2	0.77	0.02
ALTRA XERGI	0.76	0.02
LANCO BUDHIL	0.73	0.02
ADANIRE_55 (INFIRM)	0.72	0.02
RENEW_ROSHNI	0.61	0.02
GRIAN	0.60	0.02
SHREE CEMENT	0.52	0.02
MEENAKSHI	0.50	0.01
DD&DNH	0.45	0.01
NEP	0.36	0.01
JAYPEE NIGRIE	0.33	0.01
RAPP 7&8	0.30	0.01
GMR KAMALANGA	0.25	0.01
RENERGY5_WIND	0.21	0.01
ADANI GREEN_26B (INFIRM)	0.09	0.003
KSK MAHANADI	0.07	0.002
MIZORAM	0.05	0.001
CHUZACHEN HEP	0.03	0.001
BASOCHHU HEP	0.02	0.001
JORETHANG	0.02	0.001
<b>Total</b>	<b>3388.13</b>	<b>100.00</b>
<b>Volume sold by top 5 Regional Entities</b>	<b>1262.32</b>	<b>37.26</b>
<b>Herfindahl-Hirschman Index</b>		<b>0.0418</b>

**Table-25: VOLUME OF ELECTRICITY PURCHASED IN REAL TIME MARKET THROUGH POWER EXCHANGES, MAY 2024**

<b>Name of the Entity</b>	<b>Volume of Purchase (MUs)</b>	<b>% of Volume</b>
RAJASTHAN	775.46	22.89
PUNJAB	347.39	10.25
UTTAR PRADESH	341.10	10.07
TELANGANA	283.87	8.38
TAMIL NADU	185.28	5.47
MAHARASHTRA	173.26	5.11
ODISHA	164.60	4.86
WEST BENGAL	115.71	3.42
GUJARAT	99.65	2.94
BIHAR	97.10	2.87
DELHI	94.64	2.79
ANDHRA PRADESH	89.42	2.64
HARYANA	78.76	2.32
JHARKHAND	62.20	1.84
ASSAM	48.72	1.44
UTTARAKHAND	46.94	1.39
J & K	45.40	1.34
HIMACHAL PRADESH	38.32	1.13
MP	32.78	0.97
DD&DNH	29.66	0.88
NEPAL(NVVN)	23.09	0.68
DVC	21.71	0.64
KERALA	17.64	0.52
TRIPURA	16.32	0.48
KARNATAKA	14.78	0.44
AMPS Hazira	14.36	0.42
ESSAR POWER	11.86	0.35
NEA-Bihar	10.88	0.32
DGPCL Bhutan	10.27	0.30
MANIPUR	10.21	0.30
ARTPP	9.90	0.29
BALCO	9.76	0.29
MEGHALAYA	8.28	0.24
SHREE CEMENT	8.18	0.24
NAGALAND	6.60	0.19
GOA	6.54	0.19
DCPP	6.19	0.18
SKS POWER	5.42	0.16
NCR ALLAHABAD	4.88	0.14
ARUNACHAL PRADESH	4.66	0.14
SIKKIM	3.65	0.11
MB POWER	3.14	0.09
JINDAL POWER	2.07	0.06
CHHATTISGARH	2.06	0.06
ACBIL	1.33	0.04
NEP	1.23	0.04
SAINJ HEP	0.85	0.03
CHANDIGARH	0.57	0.02
NTPC STATIONS-WR	0.43	0.01
RGPPL_IR	0.41	0.01
MARUTI COAL	0.31	0.01
SIMHAPURI	0.13	0.00
JHABUA POWER_MP	0.10	0.00
PONDICHERRY	0.05	0.001
RAIGARH_ADANI	0.002	0.0001
<b>TOTAL</b>	<b>3388.13</b>	<b>100.00</b>
<b>Volume purchased by top 5 Regional Entities</b>	<b>1933.10</b>	<b>57.06</b>
<b>Herfindahl-Hirschman Index</b>		<b>0.0944</b>

**Table-26: TOTAL VOLUME OF NET TRANSACTIONS THROUGH POWER EXCHANGES  
(REGIONAL ENTITY-WISE), MAY 2024**

S. No.	Name of the Entity	Total volume of net transactions through Power Exchanges*
1	RAJASTHAN	1448.61
2	UTTAR PRADESH	677.69
3	PUNJAB	635.36
4	GUJARAT	546.12
5	TELANGANA	372.45
6	TAMIL NADU	365.69
7	UTTARAKHAND	267.70
8	ODISHA	198.03
9	MAHARASHTRA	191.17
10	HARYANA	141.88
11	NEPAL(NVVN)	100.35
12	AMPS Hazira	92.02
13	DD&DNH	90.54
14	NEA-Bihar	88.27
15	DGPCL Bhutan	78.51
16	ANDHRA PRADESH	72.40
17	NCR ALLAHABAD	44.61
18	JHARKHAND	43.73
19	DVC	38.45
20	WEST BENGAL	29.61
21	DELHI	24.23
22	NEP	17.52
23	MANIPUR	7.17
24	NAGALAND	6.67
25	SHREE CEMENT	6.52
26	TRIPURA	3.69
27	SIKKIM	3.45
28	RGPPL_IR	0.41
29	JORETHANG	-0.02
30	CHUZACHEN HEP	-0.03
31	RAPP 7&8	-0.30
32	KSK MAHANADI	-0.30
33	ADANI GREEN_26A (INFIRM)	-0.48
34	MEENAKSHI	-0.50
35	RENEW_ROSHNI	-0.61
36	ALTRA XERGI	-0.76
37	BASOCHHU HEP	-1.43
38	TRN ENERGY	-1.68
39	MEGHALAYA	-2.19
40	AMP_GREEN6	-2.25
41	COASTGEN	-2.34
42	SERENTICA RE1 (INFIRM)	-2.36
43	EMCO	-2.38
44	NOKHRA_STPP	-2.58
45	ONGC PALATANA	-2.60
46	GMR KAMALANGA	-2.83
47	CHANDIGARH	-3.49
48	JSW_RENEW_2	-4.37
49	NETCL VALLUR	-4.40
50	ADANI GREEN_25A (INFIRM)	-4.53
51	NANI VIRANI_W	-4.55
52	LANCO BUDHIL	-4.62
53	NTPC STATIONS-NER	-5.26
54	SASAN UMPP	-5.39
55	LANKO KONDAPALLI	-5.78
56	MIZORAM	-5.84

57	IL&FS	-8.59
58	GRIAN	-8.69
59	IGSTPS	-9.53
60	BRBCL, NABINAGAR	-9.59
61	ADHUNIK POWER LTD	-9.76
62	MARUTI COAL	-9.89
63	KBUNL	-9.93
64	BALCO	-10.40
65	CONTINNUM PT	-10.68
66	J & K	-11.06
67	DGEN MEGA POWER	-11.54
68	ADANI GREEN_26B (INFIRM)	-12.17
69	REENERGY5_WIND	-12.99
70	ADANIRE_55 (INFIRM)	-13.20
71	NREL_DAYAPAR (W)	-13.39
72	ADANI_W_KUTCHH4 (INFIRM)	-13.77
73	OSTRO Hiriya	-14.12
74	ARUNACHAL PRADESH	-14.80
75	JHABUA POWER_MP	-17.38
76	RKM POWER	-18.72
77	GOA	-19.11
78	AMPLUS_AGES	-19.47
79	RISING_SLR	-19.84
80	MB POWER	-20.22
81	RENEW_ROSHNI FATEHGARH	-20.35
82	SINGOLI BHATWARI HEP	-20.78
83	IBEUL	-21.52
84	DHARIWAL POWER	-23.25
85	MTPS	-23.41
86	NLC	-24.35
87	NPGC	-25.00
88	NEEPCO STATIONS	-25.28
89	ONEVOLT	-25.59
90	SIMHAPURI	-27.11
91	SORANG HEP	-28.14
92	SAINJ HEP	-29.04
93	AYANA_RP3	-30.26
94	DEVKOOT_SLR	-30.28
95	ADEPT	-32.64
96	SERENTICA RE4	-33.22
97	BIHAR	-33.45
98	SKS POWER	-37.06
99	TESPL	-43.47
100	PONDICHERRY	-50.52
101	RENEW_SR_SLR	-55.38
102	RENEW_SOJAS	-57.84
103	ADANI_S_RJ2	-59.22
104	NTPC STATIONS-WR	-60.15
105	RENEW_SPRATAP	-61.47
106	NTPC STATIONS-SR	-62.54
107	ACBIL	-62.58
108	DCPP	-63.05
109	TPSL BANDERWALA	-63.07
110	RAIGARH_ADANI	-70.07
111	ADANI GREEN_25B (INFIRM)	-71.35
112	NTPC STATIONS-NR	-71.36
113	ASEJTL_SLR	-74.92
114	ADANI_WIND	-77.34
115	JINDAL POWER	-81.28
116	AD HYDRO	-81.38

117	JITPL	-88.04
118	ASSAM	-96.98
119	KARCHAM WANGTOO	-105.24
120	NTPC STATIONS-ER	-111.68
121	KERALA	-111.72
122	SEMBCORP	-130.16
123	JAYPEE NIGRIE	-137.67
124	DB POWER	-142.81
125	ESSAR POWER	-158.47
126	ADANI_4RE	-170.38
127	ARTPP	-191.28
128	JINDAL STAGE-II	-213.00
129	MP	-305.91
130	KARNATAKA	-401.45
131	HIMACHAL PRADESH	-454.60
132	CHHATTISGARH	-723.07
* Total net includes net of transactions of electricity through various segments on power exchanges		
(-) indicates sale and (+) indicates purchase		

**Table-27: DETAILS OF CONGESTION IN POWER EXCHANGES, MAY 2024**

	Details of Congestion	Day Ahead Market			Green Day Ahead Market			High Price Day Ahead Market			Real Time Market		
		IEX	PXIL	HPX	IEX	PXIL	HPX	IEX	PXIL	HPX	IEX	PXIL	HPX
1	Unconstrained Cleared Volume (MUs)	4315.92	0.00	0.10	562.10	0.00	0.00	2.84	0.00	0.00	3358.70	0.00	37.83
2	Actual Cleared Volume and hence scheduled (MUs)	4315.58	0.00	0.10	561.82	0.00	0.00	2.84	0.00	0.00	3351.66	0.00	36.48
3	Volume of electricity that could not be cleared and hence not scheduled because of congestion (MUs) *	0.34	0.00	0.00	0.29	0.00	0.00	0.00	0.00	0.00	7.04	0.00	1.35
4	Volume of electricity that could not be cleared and hence not scheduled because of reasons other than congestion (MUs)	0.00	0.00	0.00	0.00	0.00	0.00	0.00	0.00	0.00	0.00	0.00	0.00
5	Volume of electricity that could not be cleared as % to Unconstrained Cleared Volume	0.01%	0.00%	0.00%	0.05%	0.00%	0.00%	0.00%	0.00%	0.00%	0.21%	0.00%	3.57%
6	Percentage of the time congestion occurred during the month (Number of hours congestion occurred/ Total number of hours in the month)	1.34%	0.00%	0.00%	1.11%	0.00%	0.00%	0.00%	0.00%	0.00%	3.19%	0.00%	0.67%
7	Congestion occurrence (%) time block wise												
	0.00 - 6.00 hours	0.00%	0.00%	0.00%	0.00%	0.00%	0.00%	0.00%	0.00%	0.00%	12.63%	0.00%	0.00%
	6.00 - 12.00 hours	37.50%	0.00%	0.00%	36.36%	0.00%	0.00%	0.00%	0.00%	0.00%	1.05%	0.00%	0.00%
	12.00 - 18.00 hours	57.50%	0.00%	0.00%	63.64%	0.00%	0.00%	0.00%	0.00%	0.00%	26.32%	0.00%	0.00%
	18.00 - 24.00 hours	5.00%	0.00%	0.00%	0.00%	0.00%	0.00%	0.00%	0.00%	0.00%	60.00%	0.00%	100.00%
* This power would have been scheduled had there been no congestion													

Source: IEX, PXIL, HPX & NLDC

**Table-28: VOLUME OF TRANSACTIONS THROUGH POWER EXCHANGES (DAY-WISE) (MUs), MAY 2024**

Date	Day Ahead Market <sup>#</sup>			Green Day Ahead Market <sup>#</sup>			High Price DAM <sup>#</sup>			Real Time Market <sup>#</sup>			Total Electricity Generation (MU) *
	IEX	PXIL	HPX	IEX	PXIL	HPX	IEX	PXIL	HPX	IEX	PXIL	HPX	
1-May-24	115.42	0.00	0.00	8.04	0.00	0.00	1.00	0.00	0.00	102.69	0.00	1.35	4439.49
2-May-24	118.89	0.00	0.00	11.46	0.00	0.00	0.75	0.00	0.00	85.36	0.00	0.00	4641.03
3-May-24	131.03	0.00	0.00	10.90	0.00	0.00	0.70	0.00	0.00	84.95	0.00	0.00	4755.76
4-May-24	124.78	0.00	0.00	11.29	0.00	0.00	0.39	0.00	0.00	78.15	0.00	0.00	4750.89
5-May-24	129.51	0.00	0.00	13.16	0.00	0.00	0.00	0.00	0.00	83.51	0.00	1.35	4574.49
6-May-24	130.26	0.00	0.00	13.84	0.00	0.00	0.00	0.00	0.00	99.98	0.00	2.82	4577.76
7-May-24	111.98	0.00	0.00	13.91	0.00	0.00	0.00	0.00	0.00	124.04	0.00	0.30	4584.85
8-May-24	103.64	0.00	0.00	11.98	0.00	0.00	0.00	0.00	0.00	129.72	0.00	0.60	4582.96
9-May-24	102.90	0.00	0.00	19.00	0.00	0.00	0.00	0.00	0.00	125.88	0.00	0.00	4642.48
10-May-24	113.12	0.00	0.00	17.60	0.00	0.00	0.00	0.00	0.00	104.57	0.00	0.00	4613.05
11-May-24	111.40	0.00	0.00	16.19	0.00	0.00	0.00	0.00	0.00	100.17	0.00	0.00	4526.34
12-May-24	99.33	0.00	0.00	14.94	0.00	0.00	0.00	0.00	0.00	116.17	0.00	0.00	4420.84
13-May-24	130.45	0.00	0.00	20.23	0.00	0.00	0.00	0.00	0.00	114.07	0.00	0.00	4538.09
14-May-24	134.69	0.00	0.00	16.27	0.00	0.00	0.00	0.00	0.00	122.58	0.00	0.00	4567.64
15-May-24	117.28	0.00	0.00	16.74	0.00	0.00	0.00	0.00	0.00	112.99	0.00	1.00	4734.51
16-May-24	140.29	0.00	0.00	13.84	0.00	0.00	0.00	0.00	0.00	106.75	0.00	1.08	4799.12
17-May-24	143.83	0.00	0.00	20.07	0.00	0.00	0.00	0.00	0.00	104.65	0.00	2.98	4825.60
18-May-24	148.04	0.00	0.00	18.02	0.00	0.00	0.00	0.00	0.00	103.49	0.00	2.33	4798.09
19-May-24	143.75	0.00	0.00	22.52	0.00	0.00	0.00	0.00	0.00	107.98	0.00	3.88	4568.41
20-May-24	144.05	0.00	0.00	17.62	0.00	0.00	0.00	0.00	0.00	95.15	0.00	0.45	4644.28
21-May-24	154.43	0.00	0.00	15.64	0.00	0.00	0.00	0.00	0.00	96.93	0.00	0.00	4765.00
22-May-24	159.47	0.00	0.00	19.56	0.00	0.00	0.00	0.00	0.00	104.40	0.00	2.90	4893.47
23-May-24	170.77	0.00	0.00	20.88	0.00	0.00	0.00	0.00	0.00	84.02	0.00	2.03	4848.17
24-May-24	164.75	0.00	0.00	21.25	0.00	0.00	0.00	0.00	0.00	93.04	0.00	8.88	4906.71
25-May-24	147.94	0.00	0.10	19.92	0.00	0.00	0.00	0.00	0.00	128.99	0.00	3.73	4681.44
26-May-24	149.87	0.00	0.00	21.81	0.00	0.00	0.00	0.00	0.00	129.14	0.00	0.00	4342.24
27-May-24	174.39	0.00	0.00	27.08	0.00	0.00	0.00	0.00	0.00	121.34	0.00	0.07	4384.96
28-May-24	168.85	0.00	0.00	23.68	0.00	0.00	0.00	0.00	0.00	148.08	0.00	0.00	4472.14
29-May-24	177.14	0.00	0.00	28.56	0.00	0.00	0.00	0.00	0.00	118.84	0.00	0.00	4633.50
30-May-24	180.40	0.00	0.00	28.00	0.00	0.00	0.00	0.00	0.00	121.52	0.00	0.00	4886.65
31-May-24	172.94	0.00	0.00	27.79	0.00	0.00	0.00	0.00	0.00	102.51	0.00	0.76	4869.40
<b>Total</b>	<b>4315.58</b>	<b>0.00</b>	<b>0.10</b>	<b>561.82</b>	<b>0.00</b>	<b>0.00</b>	<b>2.84</b>	<b>0.00</b>	<b>0.00</b>	<b>3351.66</b>	<b>0.00</b>	<b>36.48</b>	<b>144269.36</b>

Source: NLDC

\* As available on CEA Website. Gross Electricity Generation excluding electricity generation from renewables and captive power plants.

<sup>#</sup> Scheduled volume of all the bid areas.

**Note:** With change in the regime on implementation of GNA Regulations from 1<sup>st</sup> October 2023, the volume reported here is not strictly comparable to the volumes in previous months. Some discrepancies were identified by CERC in the data provided by NLDC which prompted further validation. The volume herein is computed after verification with the volumes reported by the Trading Licensees and the Power Exchanges, and are subject to further revision. The Commission has directed NLDC, vide letter dated 05.01.2024, to make necessary provisions to differentiate the type of transactions under GNA and T-GNA at the earliest. In the interim, the columns for daily volume of bilateral transactions have been omitted from this table.



**Table-29(a): PRICE OF DAY AHEAD TRANSACTIONS OF ELECTRICITY (DAY-WISE) (₹/kWh), MAY 2024**

Market Segment	Day Ahead Market of IEX			Day Ahead Market of PXIL			Day Ahead Market of HPX		
	Date	Minimum ACP	Maximum ACP	WA Price*	Minimum ACP	Maximum ACP	WA Price*	Minimum ACP	Maximum ACP
1-May-24	2.00	10.00	5.03	-	-	-	-	-	-
2-May-24	3.00	10.00	4.92	-	-	-	-	-	-
3-May-24	2.61	10.00	5.08	-	-	-	-	-	-
4-May-24	2.50	10.00	4.96	-	-	-	-	-	-
5-May-24	2.00	10.00	4.65	-	-	-	-	-	-
6-May-24	3.51	10.00	5.31	-	-	-	-	-	-
7-May-24	2.53	10.00	4.81	-	-	-	-	-	-
8-May-24	2.00	10.00	4.29	-	-	-	-	-	-
9-May-24	2.00	10.00	3.87	-	-	-	-	-	-
10-May-24	2.00	10.00	4.23	-	-	-	-	-	-
11-May-24	2.00	10.00	4.27	-	-	-	-	-	-
12-May-24	1.20	6.50	3.07	-	-	-	-	-	-
13-May-24	2.67	10.00	4.48	-	-	-	-	-	-
14-May-24	2.00	10.00	4.60	-	-	-	-	-	-
15-May-24	2.00	10.00	4.97	-	-	-	-	-	-
16-May-24	2.11	10.00	5.04	-	-	-	-	-	-
17-May-24	3.02	10.00	5.42	-	-	-	-	-	-
18-May-24	2.00	10.00	5.22	-	-	-	-	-	-
19-May-24	2.00	10.00	5.05	-	-	-	-	-	-
20-May-24	2.21	10.00	4.99	-	-	-	-	-	-
21-May-24	2.60	10.00	4.99	-	-	-	-	-	-
22-May-24	2.00	10.00	4.95	-	-	-	-	-	-
23-May-24	3.34	10.00	5.25	-	-	-	-	-	-
24-May-24	3.36	10.00	5.23	-	-	-	-	-	-
25-May-24	3.36	10.00	5.41	-	-	-	10.00	10.00	10.00
26-May-24	1.50	10.00	3.87	-	-	-	-	-	-
27-May-24	2.67	10.00	4.90	-	-	-	-	-	-
28-May-24	2.00	10.00	4.31	-	-	-	-	-	-
29-May-24	1.90	10.00	4.42	-	-	-	-	-	-
30-May-24	1.50	10.00	4.65	-	-	-	-	-	-
31-May-24	2.33	10.00	5.25	-	-	-	-	-	-
	<b>1.20<sup>#</sup></b>	<b>10.00<sup>#</sup></b>	<b>4.79</b>	-	-	-	<b>10.00<sup>#</sup></b>	<b>10.00<sup>#</sup></b>	<b>10.00</b>

Source: IEX, PXIL and HPX

\* Weighted average price computed based on Area Clearing Volume (ACV) and Area Clearing Price (ACP) for each hour of the day. Here, ACV and ACP represent the scheduled volume and weighted average price of all the bid areas of power exchanges.

# Maximum/Minimum in the month

**Table-29(b): PRICE OF GREEN DAY AHEAD TRANSACTIONS OF ELECTRICITY (DAY-WISE) (₹/kWh),  
MAY 2024**

Market Segment	Green Day Ahead Market of IEX			Green Day Ahead Market of PXIL			Green Day Ahead Market of HPX		
Date	Minimum ACP	Maximum ACP	Weighted Average Price*	Minimum ACP	Maximum ACP	Weighted Average Price*	Minimum ACP	Maximum ACP	Weighted Average Price*
1-May-24	2.00	10.00	4.68	-	-	-	-	-	-
2-May-24	2.05	10.00	4.33	-	-	-	-	-	-
3-May-24	2.65	10.00	4.99	-	-	-	-	-	-
4-May-24	2.50	10.00	4.67	-	-	-	-	-	-
5-May-24	2.52	10.00	3.97	-	-	-	-	-	-
6-May-24	2.50	10.00	3.87	-	-	-	-	-	-
7-May-24	2.85	10.00	4.13	-	-	-	-	-	-
8-May-24	2.90	10.00	4.55	-	-	-	-	-	-
9-May-24	2.60	10.00	3.77	-	-	-	-	-	-
10-May-24	2.45	10.00	3.66	-	-	-	-	-	-
11-May-24	2.25	10.00	3.81	-	-	-	-	-	-
12-May-24	1.99	10.00	3.24	-	-	-	-	-	-
13-May-24	1.42	10.00	3.07	-	-	-	-	-	-
14-May-24	2.60	10.00	3.63	-	-	-	-	-	-
15-May-24	2.05	10.00	3.53	-	-	-	-	-	-
16-May-24	3.25	10.00	4.67	-	-	-	-	-	-
17-May-24	2.55	10.00	3.71	-	-	-	-	-	-
18-May-24	3.35	10.00	4.32	-	-	-	-	-	-
19-May-24	2.20	10.00	3.27	-	-	-	-	-	-
20-May-24	2.85	10.00	4.15	-	-	-	-	-	-
21-May-24	3.34	10.00	4.40	-	-	-	-	-	-
22-May-24	2.67	10.00	4.05	-	-	-	-	-	-
23-May-24	2.60	10.00	3.98	-	-	-	-	-	-
24-May-24	2.80	10.00	4.04	-	-	-	-	-	-
25-May-24	2.80	10.00	3.98	-	-	-	-	-	-
26-May-24	2.49	10.00	4.18	-	-	-	-	-	-
27-May-24	2.50	10.00	3.72	-	-	-	-	-	-
28-May-24	2.67	10.00	3.81	-	-	-	-	-	-
29-May-24	2.67	10.00	3.63	-	-	-	-	-	-
30-May-24	2.00	10.00	3.34	-	-	-	-	-	-
31-May-24	1.80	10.00	3.31	-	-	-	-	-	-
	<b>1.42<sup>#</sup></b>	<b>10.00<sup>#</sup></b>	<b>3.86</b>	-	-	-	-	-	-

Source: IEX, PXIL and HPX

\* Weighted average price computed based on Area Clearing Volume (ACV) and Area Clearing Price (ACP) for each hour of the day. Here, ACV and ACP represent the scheduled volume and weighted average price of all the bid areas of power exchanges.

# Maximum/Minimum in the month

**Table-29(c): PRICE OF REAL TIME TRANSACTIONS OF ELECTRICITY (DAY-WISE) (₹/kWh), MAY 2024**

Market Segment	Real Time Market of IEX			Real Time Market of PXIL			Real Time Market of HPX		
	Minimum ACP	Maximum ACP	Weighted Average Price*	Minimum ACP	Maximum ACP	Weighted Average Price*	Minimum ACP	Maximum ACP	Weighted Average Price*
1-May-24	0.85	10.00	3.85	-	-	-	10.00	10.00	10.00
2-May-24	1.97	10.00	5.41	-	-	-	-	-	-
3-May-24	2.88	10.00	6.11	-	-	-	-	-	-
4-May-24	3.00	10.00	5.77	-	-	-	-	-	-
5-May-24	2.02	10.00	4.87	-	-	-	10.00	10.00	10.00
6-May-24	1.00	10.00	5.02	-	-	-	10.00	10.00	10.00
7-May-24	0.99	10.00	3.50	-	-	-	10.00	10.00	10.00
8-May-24	1.74	10.00	3.76	-	-	-	10.00	10.00	10.00
9-May-24	1.50	6.48	3.47	-	-	-	-	-	-
10-May-24	1.60	5.10	3.42	-	-	-	-	-	-
11-May-24	0.73	10.00	3.38	-	-	-	-	-	-
12-May-24	1.30	5.50	3.23	-	-	-	-	-	-
13-May-24	1.74	10.00	4.28	-	-	-	-	-	-
14-May-24	2.52	10.00	5.09	-	-	-	-	-	-
15-May-24	3.00	10.00	5.47	-	-	-	10.00	10.00	10.00
16-May-24	2.11	10.00	6.21	-	-	-	10.00	10.00	10.00
17-May-24	3.00	10.00	5.82	-	-	-	10.00	10.00	10.00
18-May-24	2.92	10.00	5.64	-	-	-	10.00	10.00	10.00
19-May-24	1.00	10.00	3.99	-	-	-	10.00	10.00	10.00
20-May-24	2.00	10.00	4.51	-	-	-	10.00	10.00	10.00
21-May-24	1.40	10.00	4.55	-	-	-	-	-	-
22-May-24	2.00	10.00	5.03	-	-	-	10.00	10.00	10.00
23-May-24	2.50	10.00	4.85	-	-	-	10.00	10.00	10.00
24-May-24	3.00	10.00	6.70	-	-	-	10.00	10.00	10.00
25-May-24	0.55	10.00	4.97	-	-	-	10.00	10.00	10.00
26-May-24	0.70	10.00	3.00	-	-	-	-	-	-
27-May-24	0.60	10.00	3.13	-	-	-	10.00	10.00	10.00
28-May-24	1.23	10.00	4.11	-	-	-	-	-	-
29-May-24	1.50	10.00	4.80	-	-	-	-	-	-
30-May-24	2.83	10.00	5.96	-	-	-	-	-	-
31-May-24	1.00	10.00	4.98	-	-	-	10.00	10.00	10.00
	<b>0.55<sup>#</sup></b>	<b>10.00<sup>#</sup></b>	<b>4.60</b>	-	-	-	<b>10.00<sup>#</sup></b>	<b>10.00<sup>#</sup></b>	<b>10.00</b>

Source: IEX, PXIL and HPX

\* Weighted average price computed based on Area Clearing Volume (ACV) and Area Clearing Price (ACP) for each hour of the day. Here, ACV and ACP represent the scheduled volume and weighted average price of all the bid areas of power exchanges.

# Maximum/Minimum in the month

**Table-29(d): PRICE OF HIGH PRICE DAY AHEAD TRANSACTIONS OF ELECTRICITY (DAY-WISE) (₹/kWh),  
MAY 2024**

Market Segment	High Price Day Ahead Market of IEX			High Price Day Ahead Market of PXIL			High Price Day Ahead Market of HPX		
	Minimum ACP	Maximum ACP	Weighted Average Price	Minimum ACP	Maximum ACP	Weighted Average Price	Minimum ACP	Maximum ACP	Weighted Average Price
1-May-24	12.76	12.76	12.76	-	-	-	-	-	-
2-May-24	12.79	12.79	12.79	-	-	-	-	-	-
3-May-24	12.79	12.79	12.79	-	-	-	-	-	-
4-May-24	15.00	15.00	15.00	-	-	-	-	-	-
5-May-24	-	-	-	-	-	-	-	-	-
6-May-24	-	-	-	-	-	-	-	-	-
7-May-24	-	-	-	-	-	-	-	-	-
8-May-24	-	-	-	-	-	-	-	-	-
9-May-24	-	-	-	-	-	-	-	-	-
10-May-24	-	-	-	-	-	-	-	-	-
11-May-24	-	-	-	-	-	-	-	-	-
12-May-24	-	-	-	-	-	-	-	-	-
13-May-24	-	-	-	-	-	-	-	-	-
14-May-24	-	-	-	-	-	-	-	-	-
15-May-24	-	-	-	-	-	-	-	-	-
16-May-24	-	-	-	-	-	-	-	-	-
17-May-24	-	-	-	-	-	-	-	-	-
18-May-24	-	-	-	-	-	-	-	-	-
19-May-24	-	-	-	-	-	-	-	-	-
20-May-24	-	-	-	-	-	-	-	-	-
21-May-24	-	-	-	-	-	-	-	-	-
22-May-24	-	-	-	-	-	-	-	-	-
23-May-24	-	-	-	-	-	-	-	-	-
24-May-24	-	-	-	-	-	-	-	-	-
25-May-24	-	-	-	-	-	-	-	-	-
26-May-24	-	-	-	-	-	-	-	-	-
27-May-24	-	-	-	-	-	-	-	-	-
28-May-24	-	-	-	-	-	-	-	-	-
29-May-24	-	-	-	-	-	-	-	-	-
30-May-24	-	-	-	-	-	-	-	-	-
31-May-24	-	-	-	-	-	-	-	-	-
	<b>12.76<sup>#</sup></b>	<b>15.00<sup>#</sup></b>	<b>13.08</b>	-	-	-	-	-	-

Source: IEX, PXIL and HPX

# Maximum/Minimum in the month

**Table-30: VOLUME OF TRANSACTIONS THROUGH POWER EXCHANGES (REGIONAL ENTITY\*-WISE) (MUs), MAY 2024**

Name of the Entity	Through DAM		Through GDAM		Through HP-DAM		Through RTM		Total Net***
	Sale	Purchase	Sale	Purchase	Sale	Purchase	Sale	Purchase	
PUNJAB	16.01	270.86	0.00	89.37	0.00	0.00	56.26	347.39	635.36
HARYANA	97.96	228.34	0.00	8.31	0.00	0.00	75.57	78.76	141.88
RAJASTHAN	27.04	715.91	6.28	0.00	0.00	0.00	9.44	775.46	1448.61
DELHI	111.29	84.66	0.21	29.55	0.00	0.00	73.13	94.64	24.23
UTTAR PRADESH	66.44	450.25	23.10	36.79	0.00	0.00	60.90	341.10	677.69
UTTARAKHAND	0.00	252.99	17.16	0.00	0.00	0.00	15.07	46.94	267.70
HIMACHAL P	304.68	40.98	33.31	0.01	0.00	0.00	195.93	38.32	-454.60
J & K	3.47	12.11	2.13	0.00	0.00	0.00	62.96	45.40	-11.06
CHANDIGARH	15.17	12.24	0.00	0.00	0.00	0.00	1.14	0.57	-3.49
MP	46.08	41.76	29.13	4.26	0.00	0.00	309.51	32.78	-305.91
MAHARASHTRA	124.29	153.30	16.02	104.04	0.00	0.00	99.11	173.26	191.17
GUJARAT	113.75	600.69	0.00	13.06	0.437	0.00	53.08	99.65	546.12
CHHATTISGARH	495.96	0.33	0.00	0.13	0.00	0.00	229.63	2.06	-723.07
GOA	37.84	17.85	0.00	0.00	0.00	0.00	5.66	6.54	-19.11
DD&DNH	0.00	61.32	0.00	0.01	0.00	0.00	0.45	29.66	90.54
ANDHRA P	28.15	155.16	23.46	5.04	0.00	0.00	125.61	89.42	72.40
KARNATAKA	155.99	48.02	17.10	16.93	0.00	0.00	308.08	14.78	-401.45
KERALA	83.79	16.91	0.00	7.39	0.00	0.00	69.87	17.64	-111.72
TAMIL NADU	19.71	185.84	0.00	50.20	0.00	0.00	35.92	185.28	365.69
PONDICHERRY	26.39	0.02	0.00	0.00	0.00	0.00	24.20	0.05	-50.52
TELANGANA	52.22	216.66	0.00	5.90	0.00	0.00	81.77	283.87	372.45
WEST BENGAL	68.57	191.87	8.27	0.00	0.00	2.84	203.97	115.71	29.61
ODISHA	34.17	103.76	0.00	28.17	0.00	0.00	64.32	164.60	198.03
BIHAR	13.20	93.80	0.00	0.00	0.00	0.00	211.14	97.10	-33.45
JHARKHAND	0.00	6.92	0.00	17.69	0.00	0.00	43.08	62.20	43.73
SIKKIM	1.32	4.86	0.00	0.00	0.00	0.00	3.74	3.65	3.45
DVC	18.26	0.00	0.00	65.07	0.00	0.00	30.07	21.71	38.45
ARUNACHAL	0.00	0.00	0.00	0.00	0.00	0.00	19.46	4.66	-14.80
ASSAM	6.25	10.67	0.00	0.00	0.00	0.00	150.12	48.72	-96.98
MANIPUR	0.00	7.89	0.00	0.00	0.00	0.00	10.93	10.21	7.17
MEGHALAYA	8.56	4.66	0.00	0.00	0.00	0.00	6.57	8.28	-2.19
MIZORAM	5.80	0.00	0.00	0.00	0.00	0.00	0.05	0.00	-5.84
NAGALAND	0.45	3.02	0.00	0.00	0.00	0.00	2.49	6.60	6.67
TRIPURA	0.00	3.53	0.00	0.00	0.00	0.00	16.15	16.32	3.69
NTPC STATIONS-NR	35.93	0.00	0.00	0.00	0.00	0.00	35.43	0.00	-71.36
NEP	0.27	16.92	0.00	0.00	0.00	0.00	0.36	1.23	17.52
AD HYDRO	73.25	0.00	0.00	0.00	0.00	0.00	8.13	0.00	-81.38
IGSTPS	5.12	0.00	0.00	0.00	0.00	0.00	4.41	0.00	-9.53
KARCHAM WANGTOO	95.17	0.00	0.00	0.00	0.00	0.00	10.07	0.00	-105.24
SHREE CEMENT	1.13	0.00	0.00	0.00	0.00	0.00	0.52	8.18	6.52
LANCO BUDHIL	3.89	0.00	0.00	0.00	0.00	0.00	0.73	0.00	-4.62
SORANG HEP	20.96	0.00	0.00	0.00	0.00	0.00	7.17	0.00	-28.14
SAINJ HEP	25.92	0.00	0.00	0.00	0.00	0.00	3.97	0.85	-29.04
ASEJTL_SLR	39.85	0.00	31.77	0.00	0.00	0.00	3.30	0.00	-74.92
SINGOLI BHATWARI H	8.20	0.00	6.02	0.00	0.00	0.00	6.56	0.00	-20.78
NCR ALLAHABAD	0.00	10.16	0.00	29.57	0.00	0.00	0.00	4.88	44.61
RENEW_SR_SLR	44.73	0.00	7.83	0.00	0.00	0.00	2.82	0.00	-55.38
DEVKOOT_SLR	29.01	0.00	0.00	0.00	0.00	0.00	1.27	0.00	-30.28
NOKHRA_STPP	0.00	0.00	0.00	0.00	0.00	0.00	2.58	0.00	-2.58
RAPP 7&8	0.00	0.00	0.00	0.00	0.00	0.00	0.30	0.00	-0.30
RISING_SLR	0.00	0.00	19.84	0.00	0.00	0.00	0.00	0.00	-19.84
AMP_GREEN6	0.00	0.00	0.00	0.00	0.00	0.00	2.25	0.00	-2.25
ALTRA XERGI	0.00	0.00	0.00	0.00	0.00	0.00	0.76	0.00	-0.76
ONEVOLT	25.59	0.00	0.00	0.00	0.00	0.00	0.00	0.00	-25.59
GRIAN	8.08	0.00	0.00	0.00	0.00	0.00	0.60	0.00	-8.69
AMPLUS_AGES	0.00	0.00	18.35	0.00	0.00	0.00	1.11	0.00	-19.47
RENEW_SPRATAP	46.30	0.00	0.00	0.00	0.00	0.00	15.18	0.00	-61.47

RENEW_ROSHNI FATEHGARH	12.43	0.00	6.48	0.00	0.00	0.00	1.44	0.00	-20.35
ADEPT	32.64	0.00	0.00	0.00	0.00	0.00	0.00	0.00	-32.64
TESPL	2.78	0.00	6.17	0.00	0.00	0.00	34.51	0.00	-43.47
ADANI_S_RJ2	46.68	0.00	11.77	0.00	0.00	0.00	0.77	0.00	-59.22
SERENTICA RE4	0.03	0.00	0.20	0.00	0.00	0.00	32.98	0.00	-33.22
AYANA_RP3	0.00	0.00	13.46	0.00	0.00	0.00	16.80	0.00	-30.26
TPSL BANDERWALA	5.97	0.00	48.49	0.00	0.00	0.00	8.61	0.00	-63.07
NTPC STATIONS-WR	1.80	0.00	0.00	0.00	2.25	0.00	56.54	0.43	-60.15
JINDAL POWER	79.52	0.00	0.00	0.00	0.00	0.00	3.84	2.07	-81.28
ACBIL	59.49	0.00	0.00	0.00	0.00	0.00	4.42	1.33	-62.58
BALCO	10.59	0.38	0.00	4.94	0.00	0.00	14.90	9.76	-10.40
DCPP	65.47	0.00	0.00	0.00	0.00	0.00	3.77	6.19	-63.05
EMCO	1.22	0.00	0.00	0.00	0.00	0.00	1.16	0.00	-2.38
KSK MAHANADI	0.24	0.00	0.00	0.00	0.00	0.00	0.07	0.00	-0.30
ESSAR POWER	158.86	0.00	0.00	0.00	0.00	0.00	11.48	11.86	-158.47
JINDAL STAGE-II	203.95	0.00	0.00	0.00	0.00	0.00	9.04	0.00	-213.00
DB POWER	137.93	0.00	0.00	0.00	0.00	0.00	4.87	0.00	-142.81
DHARIWAL POWER	19.85	0.00	0.00	0.00	0.00	0.00	3.40	0.00	-23.25
JAYPEE NIGRIE	137.33	0.00	0.00	0.00	0.00	0.00	0.33	0.00	-137.67
DGEN MEGA POWER	7.93	0.00	0.00	0.00	0.00	0.00	3.61	0.00	-11.54
MB POWER	11.68	2.32	0.00	0.00	0.00	0.00	14.00	3.14	-20.22
MARUTI COAL	7.73	0.00	0.00	0.00	0.00	0.00	2.46	0.31	-9.89
JHABUA POWER_MP	6.36	1.01	0.00	0.00	0.00	0.00	12.13	0.10	-17.38
SASAN UMPP	0.00	0.00	0.00	0.00	0.00	0.00	5.39	0.00	-5.39
TRN ENERGY	0.00	0.00	0.00	0.00	0.00	0.00	1.68	0.00	-1.68
RKM POWER	11.62	0.00	0.00	0.00	0.00	0.00	7.10	0.00	-18.72
SKS POWER	28.70	0.00	0.00	0.00	0.00	0.00	13.78	5.42	-37.06
AMPS Hazira	0.00	32.26	0.00	45.39	0.00	0.00	0.00	14.36	92.02
RGPL_IR	0.00	0.00	0.00	0.00	0.00	0.00	0.00	0.41	0.41
ADANI_WIND	40.31	0.00	23.53	0.00	0.00	0.00	13.50	0.00	-77.34
CONTINNUM PT	0.00	0.00	10.68	0.00	0.00	0.00	0.00	0.00	-10.68
REENERGY5_WIND	8.18	0.00	4.60	0.00	0.00	0.00	0.21	0.00	-12.99
ARTPP	173.93	0.00	0.00	0.00	0.00	0.00	27.243	9.90	-191.275
MTPS	0.80	0.00	0.00	0.00	0.00	0.00	22.608	0.00	-23.411
RAIGARH_ADANI	65.64	0.00	0.00	0.00	0.00	0.00	4.432	0.00	-70.070
NREL_DAYAPAR (W)	0.00	0.00	0.00	0.00	0.00	0.00	13.387	0.00	-13.387
ADANI_4RE	67.95	0.00	94.88	0.00	0.00	0.00	7.545	0.00	-170.379
ADANI_W_KUTCHH4 (INFIRM)	7.19	0.00	6.58	0.00	0.00	0.00	0.000	0.00	-13.766
ADANI GREEN_25B (INFIRM)	31.14	0.00	39.00	0.00	0.00	0.00	1.207	0.00	-71.351
ADANI GREEN_26B (INFIRM)	6.39	0.00	5.68	0.00	0.00	0.00	0.093	0.00	-12.166
NANI VIRANI_W	0.03	0.00	4.52	0.00	0.00	0.00	0.000	0.00	-4.549
ADANI GREEN_26A (INFIRM)	0.27	0.00	0.21	0.00	0.00	0.00	0.000	0.00	-0.481
ADANIRE_55 (INFIRM)	5.71	0.00	6.77	0.00	0.00	0.00	0.722	0.00	-13.205
ADANI GREEN_25A (INFIRM)	2.57	0.00	1.96	0.00	0.00	0.00	0.00	0.00	-4.53
NTPC STATIONS-SR	21.95	0.00	0.00	0.00	0.00	0.00	40.598	0.00	-62.544
LANKO KONDAPALLI	0.00	0.00	0.00	0.00	0.00	0.00	5.78	0.00	-5.78
SIMHAPURI	21.03	0.00	0.00	0.00	0.00	0.00	6.21	0.13	-27.11
MEENAKSHI	0.00	0.00	0.00	0.00	0.00	0.00	0.50	0.00	-0.50
COASTGEN	2.18	0.00	0.00	0.00	0.16	0.00	0.00	0.00	-2.34
IL&FS	6.66	0.00	0.00	0.00	0.00	0.00	1.93	0.00	-8.59
NLC	0.50	0.00	0.00	0.00	0.00	0.00	23.84	0.00	-24.35
SEMBCORP	95.20	0.00	0.00	0.00	0.00	0.00	34.96	0.00	-130.16
NETCL VALLUR	0.76	0.00	0.00	0.00	0.00	0.00	3.64	0.00	-4.40
OSTRO Hiriya	7.58	0.00	4.94	0.00	0.00	0.00	1.60	0.00	-14.12
JSW_RENEW_2	0.00	0.00	4.37	0.00	0.00	0.00	0.00	0.00	-4.37
RENEW_ROSHNI	0.00	0.00	0.00	0.00	0.00	0.00	0.61	0.00	-0.61
RENEW_SOJAS	17.22	0.00	7.54	0.00	0.00	0.00	33.07	0.00	-57.84

SERENTICA RE1 (INFIRM)	0.00	0.00	0.00	0.00	0.00	0.00	0.00	2.36	0.00	-2.36
NTPC STATIONS-ER	73.09	0.00	0.00	0.00	0.00	0.00	0.00	38.59	0.00	-111.68
NPGC	20.36	0.00	0.00	0.00	0.00	0.00	0.00	4.63	0.00	-25.00
ADHUNIK POWER LTD	0.00	0.00	0.00	0.00	0.00	0.00	0.00	9.76	0.00	-9.76
CHUZACHEN HEP	0.00	0.00	0.00	0.00	0.00	0.00	0.00	0.03	0.00	-0.03
GMR KAMALANGA	2.58	0.00	0.00	0.00	0.00	0.00	0.00	0.25	0.00	-2.83
JITPL	80.50	0.00	0.00	0.00	0.00	0.00	0.00	7.54	0.00	-88.04
JORETHANG	0.00	0.00	0.00	0.00	0.00	0.00	0.00	0.02	0.00	-0.02
NEPAL(NVVN)	14.28	109.82	0.00	0.00	0.00	0.00	0.00	18.27	23.09	100.35
BRBCL, NABINAGAR	9.59	0.00	0.00	0.00	0.00	0.00	0.00	0.00	0.00	-9.59
DGPCL Bhutan	0.00	68.24	0.00	0.00	0.00	0.00	0.00	0.00	10.27	78.51
KBUNL	9.93	0.00	0.00	0.00	0.00	0.00	0.00	0.00	0.00	-9.93
BASOCHHU HEP	1.41	0.00	0.00	0.00	0.00	0.00	0.00	0.02	0.00	-1.43
IBEUL	20.37	0.00	0.00	0.00	0.00	0.00	0.00	1.15	0.00	-21.52
NEA-Bihar	0.00	77.39	0.00	0.00	0.00	0.00	0.00	0.000	10.88	88.268
NTPC STATIONS-NER	2.03	0.00	0.00	0.00	0.00	0.00	0.00	3.23	0.00	-5.26
NEEPCO STATIONS	0.00	0.00	0.00	0.00	0.00	0.00	0.00	25.28	0.00	-25.28
ONGC PALATANA	1.31	0.00	0.00	0.00	0.00	0.00	0.00	1.288	0.00	-2.598

Source: NLDC

\* in case of a state, the entities which are "selling" also include generators connected to state grid and the entities which are "buying" also include open access consumers.

\*\* (-) indicates sale and (+) indicates purchase.

\*\*\* Total net includes net of transactions through various segments on power exchanges

**Table-31: VOLUME AND CHARGES UNDER DSM (DAY-WISE), MAY 2024**

Date	Volume (MU)	All India Grid Charges (₹/kWh)		
		Minimum	Maximum	Average
1-May-24	80.37	2.00	10.98	5.77
2-May-24	77.37	2.77	11.38	6.01
3-May-24	86.41	2.77	10.98	6.47
4-May-24	78.24	2.77	11.61	6.34
5-May-24	78.51	2.67	10.00	5.72
6-May-24	85.14	2.73	10.00	6.20
7-May-24	97.17	2.53	10.00	5.75
8-May-24	84.79	2.15	10.00	5.35
9-May-24	88.50	2.00	10.00	4.59
10-May-24	89.19	2.08	10.00	5.00
11-May-24	88.94	2.00	10.00	4.82
12-May-24	85.50	1.40	10.00	3.56
13-May-24	88.83	2.02	10.00	4.74
14-May-24	93.87	2.67	10.00	5.38
15-May-24	91.12	3.00	10.00	5.74
16-May-24	89.15	2.11	10.00	6.11
17-May-24	87.50	3.00	10.00	6.23
18-May-24	87.00	2.97	10.00	5.71
19-May-24	84.98	2.00	10.00	5.11
20-May-24	85.58	2.21	10.00	5.53
21-May-24	88.79	2.60	10.00	5.65
22-May-24	82.11	2.75	10.00	5.72
23-May-24	87.40	2.99	10.00	5.92
24-May-24	87.38	3.35	10.00	6.75
25-May-24	96.74	2.12	10.00	6.28
26-May-24	92.35	1.50	10.00	4.65
27-May-24	83.61	2.67	10.00	5.35
28-May-24	91.24	2.00	10.00	4.91
29-May-24	93.65	1.90	10.00	5.28
30-May-24	94.06	2.89	10.00	6.27
31-May-24	99.80	2.00	10.00	6.00
<b>Total</b>	<b>2725.27</b>	<b>1.40<sup>#</sup></b>	<b>11.61<sup>#</sup></b>	<b>5.58</b>

Source: NLDC

# Maximum/Minimum in the month



**Table-32: VOLUME OF ELECTRICITY UNDER DRAWAL/ OVER INJECTION (EXPORTED) UNDER DSM, MAY 2024**

Name of the Entity	Volume of Under drawal/ Over injection (MUs)	% of Volume
TAMIL NADU	173.35	5.88
DELHI	163.98	5.56
KARNATAKA	140.05	4.75
HARYANA	126.29	4.28
PUNJAB	113.60	3.85
GUJARAT	112.26	3.81
MAHARASHTRA	106.22	3.60
UTTAR PRADESH	96.81	3.28
MP	95.89	3.25
RAJASTHAN	78.58	2.67
J & K	78.02	2.65
NTPC STATIONS-NR	71.71	2.43
ANDHRA PRADESH	67.69	2.30
NTPC STATIONS-WR	65.97	2.24
NTPC STATIONS-SR	58.21	1.97
CHHATTISGARH	54.04	1.83
BIHAR	53.85	1.83
TELANGANA	52.32	1.77
UTTARAKHAND	52.19	1.77
ODISHA	38.61	1.31
NHPC STATIONS	36.58	1.24
NTPC STATIONS-ER	36.36	1.23
JHARKHAND	34.82	1.18
DVC	32.88	1.12
NEPAL(NVVN)	32.00	1.09
JINDAL STAGE-II	25.88	0.88
SASAN UMPP	24.23	0.82
NEEPCO STATIONS	22.77	0.77
ADANI_4RE	21.71	0.74
NLC	21.66	0.73
BBMB	16.38	0.56
BEEMPOW	16.26	0.55
RAIL	15.81	0.54
HIMACHAL PRADESH	15.51	0.53
NJPC	15.50	0.53
WEST BENGAL	15.04	0.51
IGSTPS	15.04	0.51
MANIPUR	14.99	0.51
ASSAM	14.44	0.49
AMPS Hazira	14.30	0.49
AGEMPL BHUJ	13.90	0.47
SBESS	13.81	0.47
KERALA	13.73	0.47
DGEN MEGA POWER	12.31	0.42
NEA-Bihar	11.32	0.38
JINDAL POWER	10.80	0.37
GIWEL_BHUJ	10.49	0.36
AYANA_NPKUNTA	10.03	0.34
GOA	9.90	0.34
PONDICHERRY	9.63	0.33
NEP	9.57	0.32
MIZORAM	9.31	0.32
AHEJ2L_SOLAR	8.79	0.30
JAYPEE NIGRIE	8.74	0.30
RENEW_SOJAS	8.67	0.29
RENEW_ROSHNI	8.65	0.29
MEGHALAYA	8.64	0.29
AHEJ4L_SOLAR	8.52	0.29
SKRPL	8.34	0.28

AZURE43_SLR	8.34	0.28
RKM POWER	8.14	0.28
OSTRO	8.13	0.28
TRIPURA	7.68	0.26
ADANI_WIND	7.63	0.26
RAMPUR HEP	7.46	0.25
KREDL_PVGD	7.45	0.25
THERMAL POWERTECH	7.40	0.25
IL&FS	7.36	0.25
MAITHON POWER LTD	7.31	0.25
RENEW_BHACHAU	7.24	0.25
PARAM_PVGD	7.22	0.24
GRT_JPL	7.06	0.24
ALFANAR_BHUJ	6.91	0.23
KARCHAM WANGTOO	6.91	0.23
AVAADASN_SLR	6.68	0.23
ASEJTL_SLR	6.52	0.22
OSTRO Hiriyur	6.51	0.22
CLEAN_SLR	6.32	0.21
CHANDIGARH	6.27	0.21
KAPP 3&4	6.23	0.21
FORTUM1_PVGD	6.23	0.21
NPGC	6.19	0.21
JSW_RENEW_2	5.97	0.20
SIKKIM	5.96	0.20
THARI_SLR	5.92	0.20
TATA_PVGD	5.86	0.20
LANKO_AMK	5.66	0.19
RENEW_BHUJ	5.54	0.19
ALTRA XERGI	5.52	0.19
ARUNACHAL PRADESH	5.42	0.18
APRAAVA	5.32	0.18
SPRNG_NPKUNTA	5.19	0.18
ARINSUM_RUMS	5.16	0.18
ARS_PVGD	5.05	0.17
ACME_SLR	5.02	0.17
BALCO	4.88	0.17
RPREL	4.87	0.17
AHEJ3L_SOLAR	4.84	0.16
DD&DNH	4.67	0.16
MAHINDRA_RUMS	4.67	0.16
GIWEL_TCN	4.67	0.16
NTPL	4.61	0.16
SBG_NPK	4.51	0.15
SEMBCORP	4.42	0.15
SIMHAPURI	4.29	0.15
AVADARJHN_SLR	4.23	0.14
AVIKIRAN	4.17	0.14
BRBCL,NABINAGAR	4.17	0.14
NSPCL	4.16	0.14
ESSAR POWER	3.89	0.13
ACME_HEERGARH	3.88	0.13
ARERJL_SLR	3.78	0.13
SESPL	3.67	0.12
RENEWSB	3.67	0.12
EDEN_SLR	3.59	0.12
AZURE_MAPLE_SLR	3.56	0.12
AZURE_PVGD	3.55	0.12
NETRA WIND	3.46	0.12
MSEPL	3.43	0.12
NETCL VALLUR	3.41	0.12
ORANGE_TCN	3.37	0.11
NAGALAND	3.31	0.11

NTPC_ANTP	3.30	0.11
RENEWURJA_SLR	3.29	0.11
NTPC STATIONS-NER	3.25	0.11
ABC_BHDL2	3.25	0.11
RGPPL	3.24	0.11
RENEW_SR_SLR	3.17	0.11
NOKHRA_STPP	3.09	0.10
MSUPL_BHDL2	3.06	0.10
MSRPL	3.02	0.10
JITPL	2.99	0.10
JHABUA POWER_MP	2.94	0.10
AVAADA SUNSHINE	2.90	0.10
BARC	2.82	0.10
AYANA_RP1	2.82	0.10
MB POWER	2.82	0.10
CLEANSR_SLR	2.81	0.10
AZURE41_SLR	2.79	0.09
ADY1_PVGD	2.75	0.09
RENEWSW_SLR	2.73	0.09
TATA_SLR	2.65	0.09
TORRENT SOLARGEN	2.64	0.09
SPRING_PUGALUR	2.62	0.09
RISING_SLR	2.61	0.09
AHEJOL_SLR	2.60	0.09
ACME_RUMS	2.56	0.09
FRV_ANTP	2.56	0.09
RENEW_SLR_BKN	2.55	0.09
DB POWER	2.55	0.09
RENEWJH_SLR	2.39	0.08
RENEW_PVGD	2.36	0.08
SKS POWER	2.34	0.08
CGPL	2.33	0.08
BANGLADESH	2.32	0.08
NAPP	2.27	0.08
TATA_GREEN	2.14	0.07
ESPL_RADHANESDA	2.07	0.07
SBG_PVGD	2.02	0.07
SAINJ HEP	1.99	0.07
SORANG HEP	1.99	0.07
MTPS II	1.91	0.06
AZURE_SLR	1.90	0.06
AHEJOL_S_FT2	1.88	0.06
AZURE34_SLR	1.87	0.06
AVAADA1_PVGD	1.81	0.06
AZURE_ANTP	1.71	0.06
DCPP	1.70	0.06
KSK MAHANADI	1.68	0.06
AGEL_PSS 3	1.65	0.06
FORTUM2_PVGD	1.59	0.05
POWERICA	1.58	0.05
ONGC PALATANA	1.54	0.05
TEHRI	1.42	0.05
ACBIL	1.38	0.05
RANGANADI HEP	1.36	0.05
TATA_ANTP	1.32	0.04
Railways_ER ISTS	1.28	0.04
AD HYDRO	1.24	0.04
DEVKOOT_SLR	1.14	0.04
KOTESHWAR	1.09	0.04
SINGOLI BHATWARI HEP	1.05	0.04
RANGIT HEP	1.02	0.03
AHSP_ANTP	1.01	0.03
TPSL	0.96	0.03

GSECL P-II	0.96	0.03
EMCO	0.94	0.03
DGPCL Bhutan	0.93	0.03
AKS_PVGD	0.93	0.03
YARROW_PVGD	0.92	0.03
GIPCL_RADHANESDA	0.92	0.03
ABSP_ANTP	0.87	0.03
BETAM_TCN	0.81	0.03
TPREL_RADHANESDA	0.81	0.03
AVAADA2_PVGD	0.81	0.03
SJVN GREEN	0.80	0.03
RAP B	0.80	0.03
GMR KAMALANGA	0.79	0.03
COASTGEN	0.78	0.03
TRN ENERGY	0.78	0.03
LANKO KONDAPALLI	0.77	0.03
RENEW_SLR	0.75	0.03
GSECL_Radhanesda	0.73	0.02
RONGNICHU HEP	0.72	0.02
AKSP_ANTP	0.72	0.02
IBEUL	0.71	0.02
RSTPS_FSPP	0.71	0.02
ADHUNIK POWER LTD	0.70	0.02
ADANI_SLR 4	0.67	0.02
LANCO BUDHIL	0.65	0.02
CHUZACHEN HEP	0.61	0.02
MYTRAH_TCN	0.61	0.02
FRV_NPK	0.61	0.02
SHREE CEMENT	0.59	0.02
GRIAN	0.57	0.02
TASHIDENG HEP	0.49	0.02
SRSSFPL	0.48	0.02
PARE HEP	0.46	0.02
JORETHANG	0.44	0.01
LOKTAK	0.42	0.01
RAP C	0.41	0.01
POWERGRID HVDC	0.39	0.01
DOYANG HEP	0.32	0.01
SERENTICA RE1 (INFIRM)	0.17	0.01
MEENAKSHI	0.11	0.004
NFF	0.10	0.003
HVDC ALPD	0.06	0.002
DHARIWAL POWER	0.05	0.002
SB_SLR	0.05	0.002
HVDC PUS	0.01	0.0003
<b>Total</b>	<b>2948.09</b>	<b>100.00</b>
<b>Volume Exported by top 5 Regional Entities</b>	<b>717.28</b>	<b>24.33</b>

**Table-33: VOLUME OF ELECTRICITY OVER DRAWAL/ UNDER INJECTION (IMPORTED) UNDER DSM, MAY 2024**

Name of the Entity	Volume of Over drawal/ Under Injection (MUs)	% of Volume
NTPC STATIONS-NR	172.28	6.88
NTPC STATIONS-WR	140.61	5.62
NTPC STATIONS-ER	129.30	5.17
NTPC STATIONS-SR	128.11	5.12
RAJASTHAN	105.86	4.23
UTTAR PRADESH	78.73	3.15
WEST BENGAL	67.32	2.69
GUJARAT	63.81	2.55
TAMIL NADU	58.64	2.34
BIHAR	56.46	2.26
ANDHRA PRADESH	49.06	1.96
TELANGANA	44.03	1.76
MAHARASHTRA	43.68	1.75
PUNJAB	40.30	1.61
ODISHA	39.37	1.57
MP	33.77	1.35
AMPS Hazira	28.69	1.15
KARNATAKA	26.71	1.07
HARYANA	26.52	1.06
NLC	26.27	1.05
ASSAM	23.01	0.92
AGEMPL BHUJ	22.89	0.91
AYANA_NPKUNTA	22.31	0.89
GIWEL_BHUJ	21.74	0.87
JHARKHAND	21.73	0.87
IGSTPS	20.31	0.81
KERALA	19.29	0.77
PARAM_PVGD	18.42	0.74
KREDL_PVGD	18.35	0.73
KAPP 3&4	17.91	0.72
DVC	17.66	0.71
RENEW_ROSHNI	17.41	0.70
SBESS	17.39	0.70
SPRING_PUGALUR	17.38	0.69
AH4_WIND	17.15	0.69
GRT_JPL	16.58	0.66
CHHATTISGARH	16.35	0.65
ADANI_WIND	15.92	0.64
HIMACHAL PRADESH	15.35	0.61
BALCO	14.98	0.60
NPGC	14.92	0.60
BRBCL, NABINAGAR	14.78	0.59
CGPL	14.66	0.59
FORTUM1_PVGD	14.40	0.58
DELHI	13.59	0.54
UTTARAKHAND	13.47	0.54
J & K	13.38	0.53
RENEW_BHACHAU	12.94	0.52
OSTRO	12.67	0.51
RENEW_BHUJ	12.52	0.50
RENEW_SOJAS	12.42	0.50
OSTRO Hiriyur	12.17	0.49
NETCL VALLUR	12.17	0.49
GOA	12.06	0.48
DGPCL Bhutan	11.70	0.47
AHEJ4L_SOLAR	11.62	0.46
JSW_RENEW_2	11.47	0.46
ALFANAR_BHUJ	11.14	0.45
TRIPURA	10.70	0.43

ADANI_4RE	10.12	0.40
KHURJA STPP	9.61	0.38
SKRPL	9.59	0.38
NHPC STATIONS	9.09	0.36
CHANDIGARH	8.30	0.33
MB POWER	8.18	0.33
APRAAVA	8.13	0.32
NTPC STATIONS-NER	7.91	0.32
BANGLADESH	7.89	0.32
SHREE CEMENT	7.70	0.31
AHEJ2L_SOLAR	7.44	0.30
AVAADASN_SLR	7.38	0.29
NETRA WIND	7.14	0.29
DD&DNH	7.08	0.28
AVIKIRAN	6.93	0.28
ADANIHB_WIND	6.87	0.27
IBEUL	6.85	0.27
AHEJOL_S_FTG2	6.50	0.26
AVADARJHN_SLR	6.50	0.26
NTPL	6.30	0.25
NTPC_ANTP	6.24	0.25
NEPAL(NVVN)	6.08	0.24
LANKO KONDAPALLI	5.80	0.23
TATA_PVGD	5.74	0.23
AZURE43_SLR	5.44	0.22
AH3_WIND	5.43	0.22
SESPL	5.36	0.21
RPREL	5.25	0.21
JITPL	5.24	0.21
ARUNACHAL PRADESH	5.19	0.21
AH2_WIND	5.10	0.20
TORRENT SOLARGEN	5.05	0.20
MTPS II	4.86	0.19
AVAADA SUNSHINE	4.85	0.19
BEEMPOW	4.80	0.19
SASAN UMPP	4.62	0.18
ARS_PVGD	4.61	0.18
RAPP 7&8	4.58	0.18
SERENTICA RE4	4.56	0.18
DEVKOOT_SLR	4.44	0.18
COASTGEN	4.42	0.18
ADANI_S_RJ2	4.29	0.17
JHABUA POWER_MP	4.27	0.17
RGPPL	4.27	0.17
AYANA_RP1	4.10	0.16
NEA-Bihar	4.08	0.16
NEEPCO STATIONS	4.03	0.16
AHEJOL_SLR	3.94	0.16
ACBIL	3.92	0.16
AZURE_PVGD	3.80	0.15
ACME_RUMS	3.77	0.15
SBG_NPK	3.73	0.15
ESSAR POWER	3.69	0.15
MSEPL	3.55	0.14
TATA_SLR	3.38	0.14
AHEJ3L_SOLAR	3.33	0.13
KARCHAM WANGTOO	3.32	0.13
GIWEL_TCN	3.28	0.13
ADY1_PVGD	3.27	0.13
AZURE41_SLR	3.26	0.13
MAITHON POWER LTD	3.20	0.13
ASEJTL_SLR	3.19	0.13
ALTRA XERGI	3.19	0.13

RENEW_SAAYAN	3.16	0.13
RAP C	3.13	0.13
MSUPL_BHDL2	3.11	0.12
ADHUNIK POWER LTD	3.00	0.12
SIKKIM	2.99	0.12
SPRNG_NPKUNTA	2.99	0.12
FRV_ANTP	2.98	0.12
EDEN_SLR	2.96	0.12
SEMBCORP	2.95	0.12
MAHINDRA_RUMS	2.91	0.12
RENEW_SR_SLR	2.87	0.11
RENEWURJA_SLR	2.87	0.11
RENEWSB	2.84	0.11
DB POWER	2.82	0.11
AVAADA1_PVGD	2.80	0.11
NSPCL	2.80	0.11
NAPP	2.69	0.11
ADEPT	2.68	0.11
TESPL	2.66	0.11
ABC_BHDL2	2.64	0.11
RENEW_SLR_BKN	2.63	0.11
MSRPL	2.62	0.10
RENEWSW_SLR	2.60	0.10
CLEAN_SLR	2.59	0.10
RENEWJH_SLR	2.58	0.10
RENEW_ROSHNI FATEHGARH	2.58	0.10
THARI_SLR	2.57	0.10
CLEANSR_SLR	2.55	0.10
ARINSUM_RUMS	2.54	0.10
MEENAKSHI	2.52	0.10
MEGHALAYA	2.51	0.10
AZURE_MAPLE_SLR	2.50	0.10
GRIAN	2.50	0.10
RENEW_PVGD	2.44	0.10
NOKHRA_STPP	2.44	0.10
AD HYDRO	2.33	0.09
ORANGE_TCN	2.31	0.09
ACME_HEERGARH	2.14	0.09
TEHRI	2.07	0.08
SIMHAPURI	2.06	0.08
NEP	2.03	0.08
RISING_SLR	1.93	0.08
ACME_SLR	1.92	0.08
RAIL	1.90	0.08
DHARIWAL POWER	1.89	0.08
SALAL HEP	1.86	0.07
PONDICHERRY	1.83	0.07
SBG_PVGD	1.78	0.07
THERMAL POWERTECH	1.78	0.07
POWERICA	1.77	0.07
RANGANADI HEP	1.76	0.07
TATA_GREEN	1.74	0.07
AZURE_SLR	1.67	0.07
AZURE_ANTP	1.66	0.07
JINDAL POWER	1.64	0.07
DCPP	1.64	0.07
TATA_ANTP	1.60	0.06
ARERJL_SLR	1.56	0.06
SKS POWER	1.49	0.06
RKM POWER	1.49	0.06
AGEL_PSS 3	1.48	0.06
DGEN MEGA POWER	1.42	0.06
RSTPS_FSPP	1.34	0.05

RAP B	1.33	0.05
BBMB	1.32	0.05
ESPL_RADHANESDA	1.31	0.05
Railways_ER ISTS	1.29	0.05
FORTUM2_PVGD	1.29	0.05
GMR KAMALANGA	1.28	0.05
EMCO	1.27	0.05
RENEW_SVIHAAN	1.20	0.05
FRV_NPK	1.11	0.04
NJPC	1.10	0.04
TPSL	1.06	0.04
JINDAL STAGE-II	1.05	0.04
AVAADA2_PVGD	1.03	0.04
AKSP_ANTP	1.01	0.04
AZURE34_SLR	0.93	0.04
TRN ENERGY	0.92	0.04
JAYPEE NIGRIE	0.90	0.04
RENEW_SLR	0.88	0.04
MYTRAH_TCN	0.85	0.03
TPSL BANDERWALA	0.84	0.03
ABSP_ANTP	0.82	0.03
AHSP_ANTP	0.80	0.03
AKS_PVGD	0.80	0.03
YARROW_PVGD	0.74	0.03
TPREL_RADHANESDA	0.71	0.03
RONGNICHU HEP	0.68	0.03
KSK MAHANADI	0.66	0.03
SRSSFPL	0.65	0.03
SAINJ HEP	0.63	0.03
MIZORAM	0.62	0.02
GIPCL_RADHANESDA	0.59	0.02
KOTESHWAR	0.59	0.02
GSECL P-II	0.53	0.02
LANKO_AMK	0.53	0.02
ADANI_SLR 4	0.52	0.02
SJVN GREEN	0.52	0.02
BETAM_TCN	0.52	0.02
SINGOLI BHATWARI HEP	0.48	0.02
RANGIT HEP	0.46	0.02
SORANG HEP	0.43	0.02
NAGALAND	0.42	0.02
PARE HEP	0.40	0.02
CHUZACHEN HEP	0.33	0.01
HVDC PUS	0.31	0.01
GSECL_Radhnesda	0.30	0.01
SERENTICA RE1 (INFIRM)	0.27	0.01
IL&FS	0.26	0.01
DOYANG HEP	0.24	0.01
MANIPUR	0.20	0.01
LANCO BUDHIL	0.18	0.01
RAMPUR HEP	0.16	0.01
JORETHANG	0.13	0.01
POWERGRID HVDC	0.11	0.004
TASHIDENG HEP	0.10	0.004
NFF	0.08	0.003
LOKTAK	0.08	0.003
ONGC PALATANA	0.03	0.001
HVDC ALPD	0.03	0.001
<b>TOTAL</b>	<b>2502.45</b>	<b>100.00</b>
<b>Volume Imported by top 5 Regional Entities</b>	<b>676.15</b>	<b>27.02</b>



**Table-34: VOLUME AND PRICE OF RENEWABLE ENERGY CERTIFICATES (RECs) TRANSACTED THROUGH POWER EXCHANGES AND THROUGH TRADERS (BILATERAL), MAY 2024**

Sr. No	Details of REC Transactions	Through Power Exchange			Bilateral through Traders
		IEX	PXIL	HPX	
1	Volume of Buy Bid	1101939	376493	35000	-
2	Volume of Sell Bid	6547383	5764173	4010083	-
3	Ratio of Buy Bid to Sell Bid Volume	0.17	0.07	0.01	-
4	Traded Volume (MWh)	1054623	320232	25000	3637
5	Weighted Average Price (₹/MWh)	172.62	163.49	165.00	222.51

Source: Power Exchanges & Grid-India REC Report

Note: 1 REC = 1 MWh

Under the CERC REC Regulations 2022, the categorization of RECs has been dispensed with and exchange of RECs through trading licensees has also been allowed

**Table-35(a): VOLUME AND PRICE OF CROSS BORDER TRADE THROUGH DAY AHEAD MARKET AT IEX, MAY 2024**

Sr. No.	Neighbouring Country	Volume (MU)			Weighted Average Price (₹/kWh)	
		Sale	Purchase	Net*	Sale	Purchase
1	Nepal	14.55	204.12	189.57	5.29	3.31
2	Bhutan	1.41	68.24	66.83	7.86	3.17
	<b>Total</b>	<b>15.96</b>	<b>272.36</b>	<b>256.41</b>	-	-

Source: IEX

\* Net indicates difference of volume purchased and sold by the respective neighbouring country

Note: No Cross Border transactions were recorded in DAM at PXIL and HPX

**Table-35(b): VOLUME AND PRICE OF CROSS BORDER TRADE THROUGH REAL TIME MARKET AT IEX, MAY 2024**

Sr. No.	Neighbouring Country	Volume (MU)			Weighted Average Price (₹/kWh)	
		Sale	Purchase	Net*	Sale	Purchase
1	Nepal	18.63	35.20	16.56	3.28	3.90
2	Bhutan	0.02	10.27	10.25	8.43	4.02
	<b>Total</b>	<b>18.66</b>	<b>45.47</b>	<b>26.82</b>	-	-

Source: IEX

\* Net indicates difference of volume purchased and sold by the respective neighbouring country

Note: No Cross Border transactions were recorded in RTM at PXIL and HPX



**Economics Division**  
**Central Electricity Regulatory Commission**  
**6th, 7th & 8th Floors, Tower B, World Trade Centre,**  
**Nauroji Nagar, New Delhi- 110029**